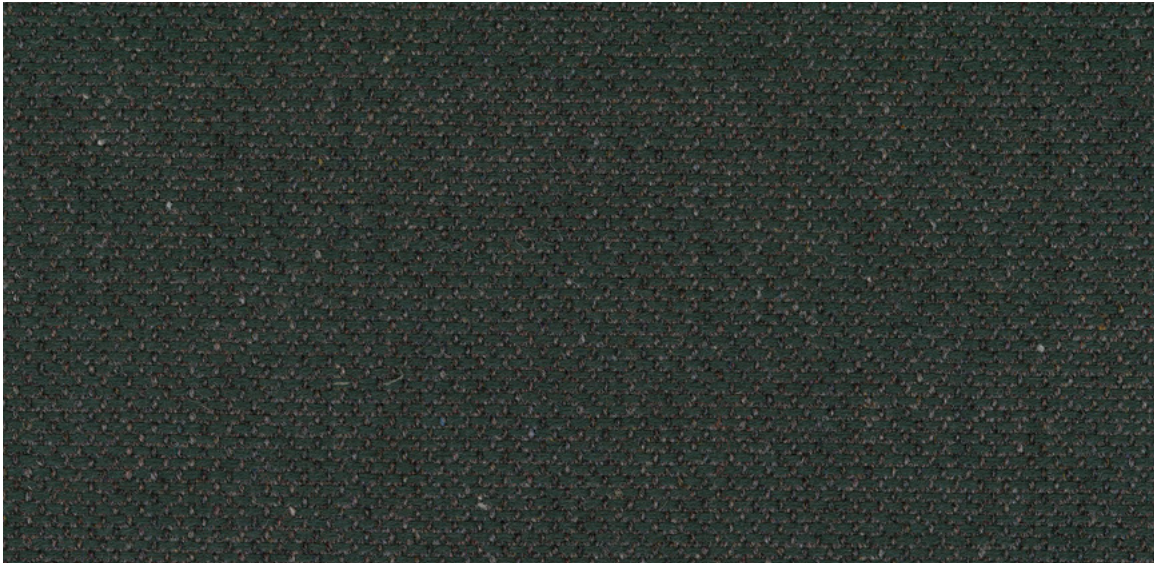
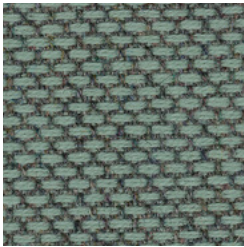


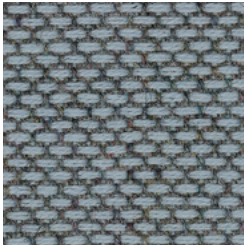
65 Re-wool. **Wilkhahn**



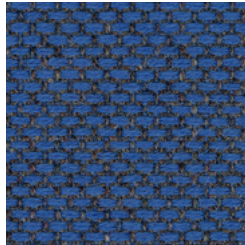
65/987



65/858



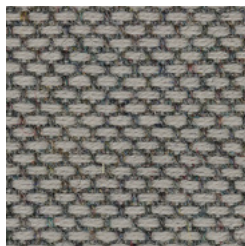
65/718



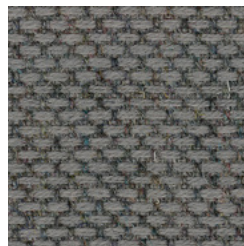
65/767



65/787



65/128



65/158

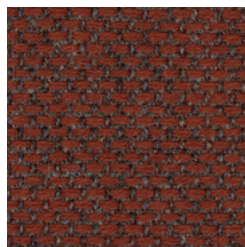


65/198

65 Re-wool



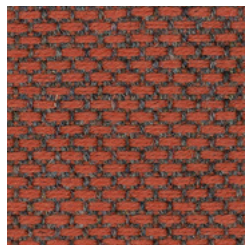
65/648



65/687



65/568



65/558



65/218



65/347



65/397


Beschreibung

45% recycelte Wolle
45% Schurwolle, Kammgarn
10% Nylon
540g/lfd. m
Breite 140 cm

Prüfungsergebnisse

Scheuerfestigkeit:
100.000 Scheuerhübe,
BS EN ISO 12947-2 (Martindale)
Lichtechtheit:
6-7, BS EN ISO 105-B02,
Methode 2
Pilling:
4, BS EN ISO 12945-2
Reibechtheit:
Trocken 4-5, nass 4-5
EN ISO 105-X12
Flammschutz:
EN 1021-1/-2
BS 5852 Crib 1
BS 5852 Crib 5
NF D 60-013
UNI 9175 Class 1 IM
ÖNORM A3800-1, B1, Q1, TR1
EN 13501-1 B, s2, d0
CATB 117-2013
ASTM E84 Class 1

Reinigung

Festverspannte Bezüge:
Regelmäßig absaugen
Professionelle
Trockenreinigung
Abnehmbare Bezüge:



Description

45% recycled wool
45% virgin wool, worsted
10% Nylon
540g/lin. m
Width 140 cm (55")

Test results

Abrasion resistance:
100.000 rubs, BS EN ISO 12947-2
(Martindale)
Lightfastness:
6-7, BS EN ISO 105-B02,
method 2
Pilling:
4, BS EN ISO 12945-2
Fastness to rubbing:
Dry 4-5, wet 4-5
EN ISO 105-X12
Flame resistance:
EN 1021-1/-2
BS 5852 Crib 1
BS 5852 Crib 5
NF D 60-013
UNI 9175 Class 1 IM
ÖNORM A3800-1, B1, Q1, TR1
EN 13501-1 B, s2, d0
CATB 117-2013
ASTM E84 Class 1

Cleaning

Permanent covers:
Vacuum regularly
have dry cleaned
Replaceable covers:



Description

45% Laine recyclée
45% Laine vierge, laine peignée
10% Nylon
540g/m. L
Largeur 140 cm

Résultats des tests

Résistance à l'abrasion :
100.000 frottements,
BS EN ISO 12947-2 (Martindale)
Résistance à la lumière :
6-7, BS EN ISO 105-B02,
Méthode 2
Boulochage :
4, BS EN ISO 12945-2
Solidité au Frottement :
Sec 4-5, humide 4-5
EN ISO 105-X12
Tenue au feu :
EN 1021-1/-2
BS 5852 Crib 1
BS 5852 Crib 5
NF D 60-013
UNI 9175 Class 1 IM
ÖNORM A3800-1, B1, Q1, TR1
EN 13501-1 B, s2, d0
CATB 117-2013
ASTM E84 Class 1

Nettoyage

Housses tendues :
Aspirer régulièrement
nettoyage à sec professionnel
Housses amovibles :



Descripción

45% Lana reciclada
45% Lana virgen, lana peinada
10% Nylon
540g/lin. m
Ancho 140 cm

Pruebas

Resistencia a la abrasión:
100.000 golpes,
BS EN ISO 12947-2 (Martindale)
Resistencia a la luz:
6-7, BS EN ISO 105-B02,
método 2
Pilling:
4, BS EN ISO 12945-2
Solidez al rozamiento:
Seco 4-5, húmedo 4-5
EN ISO 105-X12
Protección contra llamas:
EN 1021-1/-2
BS 5852 Crib 1
BS 5852 Crib 5
NF D 60-013
UNI 9175 Class 1 IM
ÖNORM A3800-1, B1, Q1, TR1
EN 13501-1 B, s2, d0
CATB 117-2013
ASTM E84 Class 1

Limpieza

Tapicería fija:
Aspirar regularmente
limpieza profesional en seco
Tapicería intercambiable:




50857000 - BH

Wilkhahn Germany

Wilkening + Hahne GmbH+Co. KG, Fritz-Hahne-Straße 8, 31848 Bad Münder

Wilkhahn worldwide

Australia, Belgium, China, Deutschland, España, Hong Kong, Japan, Maroc, Nederland, Österreich, Polska, Schweiz, Singapore, South Africa, United Arab Emirates, United Kingdom, United States of America

wilkhahn.com