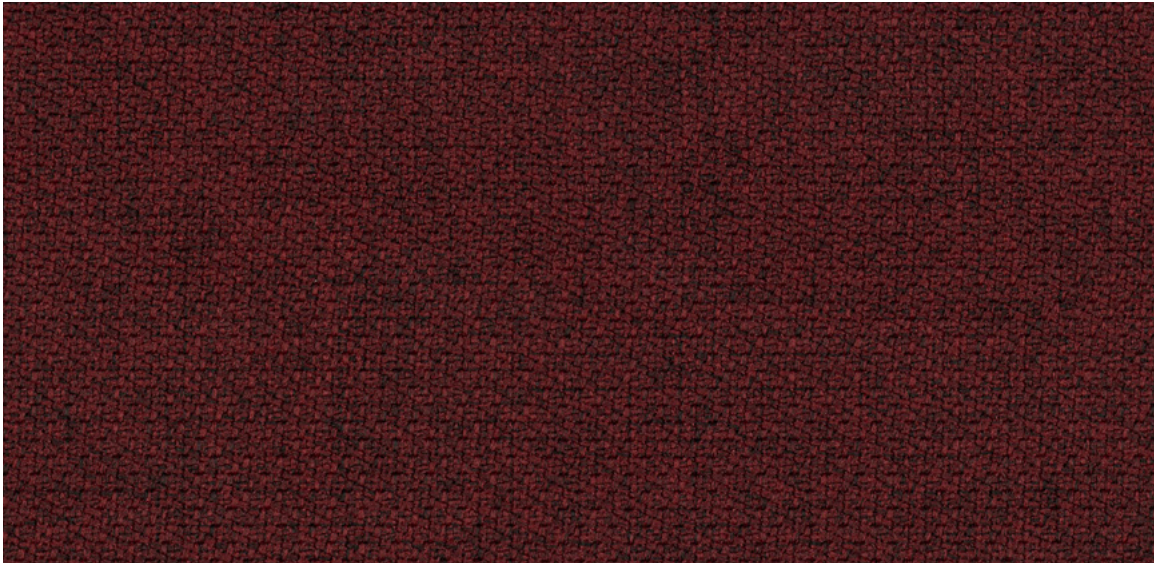
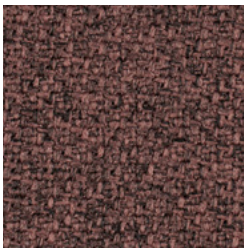


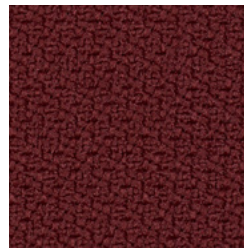
54 Step/Step Melange. **Wilkhahn**



54/4159M



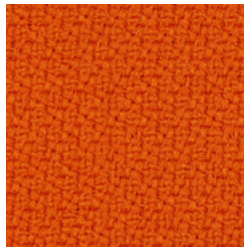
54/4270M



54/4159



54/3139M



54/3082



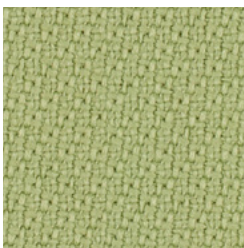
54/1286M



54/1103M



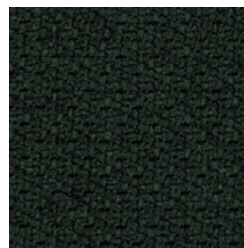
54/1791



54/8799



54/8300M



54/8121M

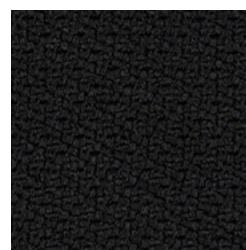
54 Step/Step Melange



54/0011M



54/0021M



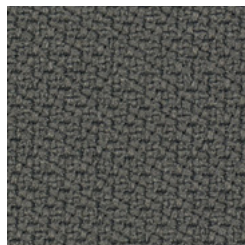
54/0999



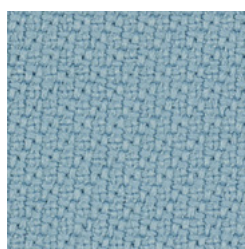
54/0004



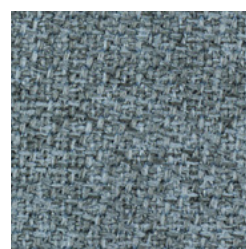
54/0004M



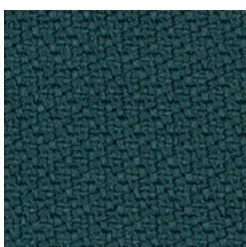
54/0092



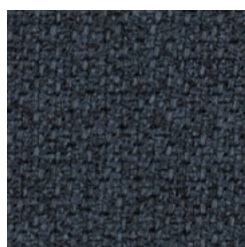
54/7004



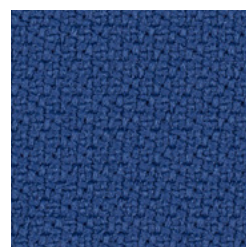
54/7004M



54/8158M



54/6265M



54/6149

Die digitalen Muster weichen von den Originaltönen ab.
The digital sample colours differ from the originals.
Les échantillons numériques diffèrent du nuancier original.
Los tonos de colores de las muestras en formato digital, varían de los originales.

Beschreibung
100% Trevira CS
470g/dfd. m
Breite 140 cm

Prüfungsergebnisse

Scheuerfestigkeit:
100.000 Scheuerhübe,
BS EN ISO 12947-2 (Martindale)
Lichtechtheit:
5-7, BS EN ISO 105-B02,
Methode 2
Pilling:
4-5, BS EN ISO 12945-2
Reibechtheit:
Trocken 4-5, nass 4-5
EN ISO 105-X12
Flammschutz:
EN 1021-1/-2
DIN 4102-B1
BS 5852 Crib 5, wenn auf geeig-
netem CMHR Schaum montiert
BS 7176 Medium Hazard
NF P 92-503/504/505 M1
ÖNORM A3800-1, B1, Q1, TR1
ÖNORM B 3825
EN 13501-1 B, s1, d0
CAT B 117-2013

Reinigung

Festverspannte Bezüge:
Regelmäßig absaugen
Professionelle
Trockenreinigung
Abnehmbare Bezüge:



Description
100 % Trevira CS
470 g/lin. m
Width 140 cm

Test results

Abrasion resistance:
100.000 rubs, BS EN ISO 12947-2
(Martindale)
Lightfastness:
5-7, BS EN ISO 105-B02,
method 2
Pilling:
4-5, BS EN ISO 12945-2
Fastness to rubbing:
Dry 4-5, wet 4-5
EN ISO 105-X12
Flame resistance:
EN 1021-1/-2
DIN 4102-B1
BS 5852 Crib 5, if mounted on
suitable CMHR foam
BS 7176 Medium Hazard
NF P 92-503/504/505 M1
ÖNORM A3800-1, B1, Q1, TR1
ÖNORM B 3825
EN 13501-1 B, s1, d0
CAT B 117-2013

Cleaning

Permanent covers:
Vacuum regularly
have dry cleaned
Replaceable covers:



Description
100% Trevira CS
470 g/m. L
Largeur 140 cm

Résultats des tests

Résistance à l'abrasion :
100.000 frottements,
BS EN ISO 12947-2 (Martindale)
Résistance à la lumière :
5-7, BS EN ISO 105-B02,
Méthode 2
Boulochage :
4-5, BS EN ISO 12945-2
Solidité au Frottement :
Sec 4-5, humide 4-5
EN ISO 105-X12
Tenue au feu :
EN 1021-1/-2
DIN 4102-B1
BS 5852 Crib 5, si monté sur
une mousse CMHR appropriée
BS 7176 Medium Hazard
NF P 92-503/504/505 M1
ÖNORM A3800-1, B1, Q1, TR1
ÖNORM B 3825
EN 13501-1 B, s1, d0
CAT B 117-2013

Nettoyage

Housses tendues :
Aspirer régulièrement
nettoyage à sec professionnel
Housses amovibles :



Descripción
100 % Trevira CS
470 g/lin. m
Ancho 140 cm

Pruebas

Resistencia a la abrasión:
100.000 golpes,
BS EN ISO 12947-2 (Martindale)
Resistencia a la luz:
5-7, BS EN ISO 105-B02,
método 2
Pilling:
4-5, BS EN ISO 12945-2
Solidez al rozamiento:
Seco 4-5, húmedo 4-5
EN ISO 105-X12
Protección contra llamas:
DIN 4102-B1
EN 1021-1/-2
BS 5852 Crib 5, si se monta sobre
una espuma CMHR adecuada
BS 7176 Medium Hazard
NF P 92-503/504/505 M1
ÖNORM A3800-1, B1, Q1, TR1
ÖNORM B 3825
EN 13501-1 B, s1, d0
CAT B 117-2013

Limpieza

Tapicería fija:
Aspirar regularmente
limpieza profesional en seco
Tapicería intercambiable:



50863000 - BH

Wilkhahn Germany

Wilkening + Hahne GmbH+Co. KG, Fritz-Hahne-Straße 8, 31848 Bad Münder

Wilkhahn worldwide

Australia, Belgium, China, Deutschland, España, Hong Kong, Japan, Maroc, Nederland, Österreich, Polska, Schweiz, Singapore, South Africa, United Arab Emirates, United Kingdom, United States of America

wilkhahn.com