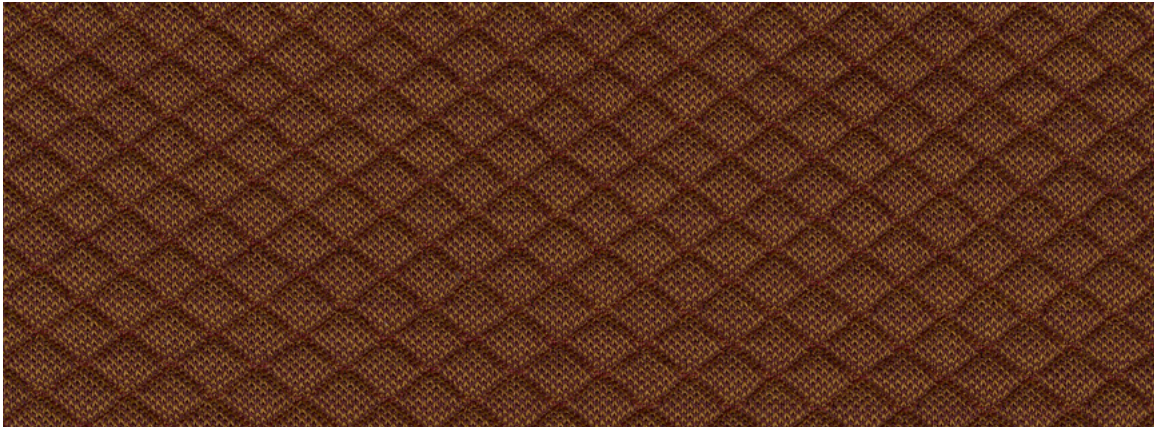
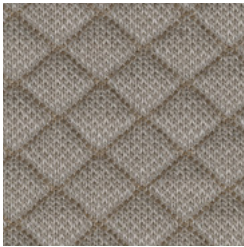


97 Mosaic. **Wilkhahn**



97/472



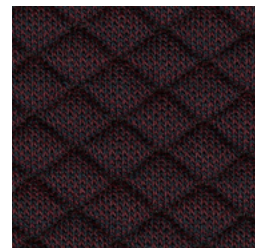
97/222



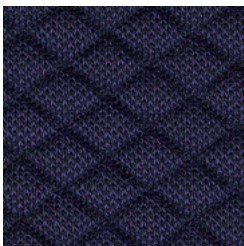
97/922



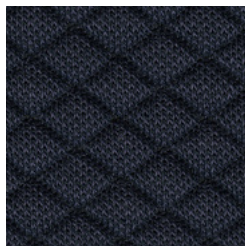
97/972



97/682



97/672



97/692



97/182

## 97 Mosaic

Mosaic ist ein gestrickter dreidimensionaler Stoff mit haptischem Rautenmuster und hoher Dehnbarkeit. Die Farbtiefe ergibt sich je nach Farbton durch die Kombination von zwei dezent kontrastierenden oder Ton-in-Ton-Garnen.

Mosaic is a very stretchy, three-dimensional knit with a tactile diamond pattern. The depth of color is achieved by combining two subtly contrasting tone-on-tone yarns.

Mosaic est un tissu tridimensionnel tricoté avec un motif en losange haptique qui se distingue par sa grande extensibilité. La profondeur de la couleur résulte, selon la teinte, de la combinaison de deux fils discrètement contrastés ou ton sur ton.

Mosaic es una tapicería de punto tridimensional altamente flexible con estampado de rombos con textura. Según el tono, la profundidad del color se genera por el discreto contraste entre dos hilos o por la combinación de dos tonos.

#### Beschreibung

27% Schurwolle  
12% Polyester  
9% Nylon  
6% Elasthan  
46% Polyesterfüllung  
1080 g/lf. m  
Breite 140 cm

#### Description

27% Virgin wool  
12% Polyester  
9% Nylon  
6% Spandex fiber  
46% Polyester filling  
1080 g/lin. m  
Width 140 cm (55")

#### Description

27% Laine vierge  
12% Polyester  
9% Nylon  
6% Élasthanne  
46% Rembourrage polyester  
1080 g/m. L  
Largeur 140 cm

#### Descripción

27% Lana virgen  
12% Poliéster  
9% Nailon  
6% Elastano  
46% Relleno de poliéster  
1080 g/lin. m  
Ancho 140 cm

#### Prüfungsergebnisse

Scheuerfestigkeit:  
100.000 Scheuerhübe,  
BS EN ISO 12947-2 (Martindale)  
Lichtechtheit:  
6, BS EN ISO 105-B02,  
Methode 2  
Pilling:  
4-5, BS EN ISO 12945-2  
Reibechtheit:  
Trocken 4, nass 4  
EN ISO 105-X12  
Flammschutz:  
EN 1021-1/-2  
DIN 4102-B2  
BS 5852 Crib 1  
ASTM E84 Class 1  
CAT B117-2013

#### Test results

Abrasion resistance:  
100.000 rubs,  
BS EN ISO 12947-2 (Martindale)  
Lightfastness:  
6, BS EN ISO 105-B02,  
method 2  
Pilling:  
4-5, BS EN ISO 12945-2  
Fastness to rubbing:  
Dry 4, wet 4 EN ISO 105-X12  
Flame resistance:  
EN 1021-1/-2  
DIN 4102-B2  
BS 5852 Crib 1  
BS 5852 Crib 5  
ASTM E84 Class 1  
CAT B117-2013






#### Résultats des tests

Résistance à l'abrasion :  
100.000 frottements,  
BS EN ISO 12947-2 (Martindale)  
Résistance à la lumière :  
6, BS EN ISO 105-B02,  
méthode 2  
Boulochage :  
4-5, BS EN ISO 12945-2  
Solidité au Frottement :  
Sec 4, humide 4 EN ISO 105-X12  
Tenue au feu :  
EN 1021-1/-2  
DIN 4102-B2  
BS 5852 Crib 1  
BS 5852 Crib 5  
ASTM E84 Classe 1  
CAT B117-2013






#### Pruebas

Resistencia a la abrasión:  
100.000 golpes,  
BS EN ISO 12947-2 (Martindale)  
Resistencia a la luz:  
6, BS EN ISO 105-B02, Método 2  
Pilling:  
4-5, BS EN ISO 12945-2  
Solidez al rozamiento:  
Seco 4, húmedo 4  
EN ISO 105-X12  
Protección contra llamas:  
EN 1021-1/-2  
DIN 4102-B2  
BS 5852 Crib 1  
BS 5852 Crib 5  
ASTM E84 Clase 1  
CAT B117-2013






#### Reinigung

Festverspannte Bezüge:  
Regelmäßig absaugen  
Professionelle  
Trockenreinigung  
Abnehmbare Bezüge:  
    




#### Cleaning

Permanent covers:  
Vacuum regularly  
have dry cleaned  
Replaceable covers:  
    

#### Nettoyage

Housses tendues :  
Aspirer régulièrement  
nettoyage à sec professionnel  
Housses amovibles :  
    

#### Limpieza

Tapicería fija:  
Aspirar regularmente  
limpieza profesional en seco  
Tapicería intercambiable:  
    

50865000 - BH

## Wilkhahn Germany

Wilkening + Hahne GmbH+Co. KG, Fritz-Hahne-Straße 8, 31848 Bad Münder

## Wilkhahn worldwide

Australia, Belgium, China, Deutschland, España, Hong Kong, Japan, Maroc, Nederland, Österreich, Polska, Schweiz, Singapore, South Africa, United Arab Emirates, United Kingdom, United States of America

wilkhahn.com