

Occo
Farben/Materialien.
Colors/Materials.
Coloris/Matières.
Colores/Materiales.

Wilkhahn

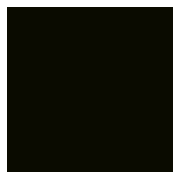
Occo/Occo SC Schalenfarben. Shell colors. Coloris de la coque.
Colores de la coquilla.



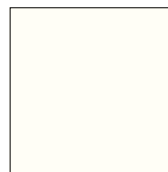
Grau (Pantone
Cool Gray 10 C)



Graubeige
(Pantone 7530 C)



Schwarz
(RAL 9011)



Weiß
(RAL 9016)

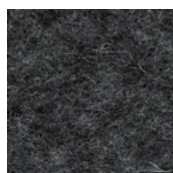


Smaragdgrün
(Pantone 5477 C)

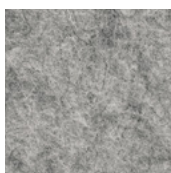


Sienarot
(Pantone 3523 C)

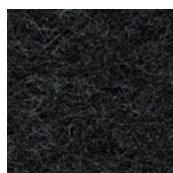
Filzauflagen. Felt cushions. Galettes en feutre.
Almohadillas de fieltro.



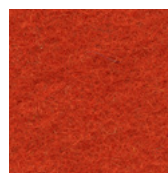
Anthrazit 01 AR



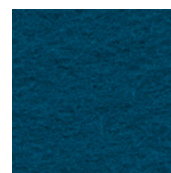
Hellmeliert 07 AR



Graphit 08 AR



Mango 20 AR



Deep Water 39 AR

Beschreibung
100% Schurwolle,
mit Antirutsch-
Beschichtung,
Filzstärke 5 mm,
1,5 kg/qm

Prüfungsergebnisse
Abrieb: 0,4 bis
0,5 g/50 cm²,
DIN 53863 T2
Lichtechtheit:
5-7, abhängig
von der Farbe,
BS EN ISO 105-B02
Methode 2
Pilling: gering
Flammschutz:
Auf Anfrage

Reinigung
Handreinigung

Description
100% wool,
with non-slip
coating, felt
thickness 5 mm,
1.5 kg/sq m

Test results
Abrasion:
0.4 to
0.5 g/50 cm²,
DIN 53863 T2
Lightfastness:
5-7, depending
on the color,
BS EN ISO 105-B02
method 2
Pilling: low
Flame retardancy:
on request

Cleaning
Hand-wash only

Descriptif
100 % laine vierge,
Traité antidéra-
pant sur l'envers,
épaisseur 5 mm,
1,5 kg/m²

Tests de résistance:
Abrasion : 0,4 à
0,5 g/50 cm² selon,
DIN 53863 T2,
Résistance à la
lumière :
5-7 selon coloris,
BS EN ISO 105-
B02 méthode
2, Boulochage :
faible,
Tenue au feu :
sur demande

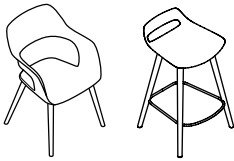
Entretien:
Lavage à la main

Descripción:
100% lana con
revestimiento
antideslizante;
grosor del fieltro: 5
mm, 1,5 kg/m²

Pruebas:
Abrasión:
0,4 a 0,5 g/50 cm²,
DIN 53863 T2;
resistencia a la
luz: 5-7, según
del color,
BS EN ISO 105-B02
método 2;
pilling: bajo; pro-
tección
contra llamas:
bajo pedido

Limpieza:
Lavar únicamente
a mano

Occo/Occo SC Gestellausführungen. Frame versions.
Variantes de finitions de la structure. Acabados del armazón.



Universalstuhl und Barstuhl Vierbeingestell Massivholz.
Multipurpose chair and bar stool with solid wood four-leg frame.
Chaise multifonctions et tabouret de bar à quatre pieds en bois massif.
Silla multiusos y taburete con armazón de cuatro patas de madera maciza.



Barstuhl Säulenfußgestell.
Bar stool Pedestal base.
Tabouret de bar sur colonne de piétement.
Taburete de bar con columna.



Eiche, natur geölt



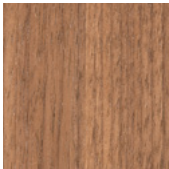
Eiche, weiß geölt



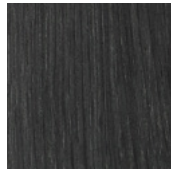
Eiche, schwarz lackiert



Edelstahl gebürstet



Nussbaum, natur geölt



Eiche, graphit gebeizt



Vierbeingestell, Vier- und Fünfsternfuß, Stahlrohr; Kufengestell Stahlrundstab.
Four-leg base frame, four- and five-star base, tubular steel; Sled (skid) base steel rod.
Piétement à quatre pieds et en étoile à quatre ou à cinq branches en tube d'acier ; piétement traîneau en fil d'acier.
Armazón de cuatro patas y armazón con pie de estrella de cuatro o cinco radios de tubos de acero; armazón de patín de vara de acero.



51 Glanzverchromt



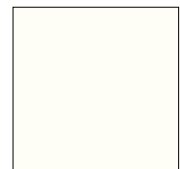
85 Grau strukturmatt beschichtet (Pantone Cool Gray 10 C)



86 Graubeige strukturmatt beschichtet (Pantone 7530 C)



90 Schwarz strukturmatt beschichtet (RAL 9011)



91 Weiß strukturmatt beschichtet (RAL 9016)

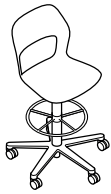


94 Smaragdgrün strukturmatt beschichtet (Pantone 5477 C)



95 Sienarot strukturmatt beschichtet (Pantone 3523 C)

Occo/Occo SC Gestellausführungen. Frame versions.
Variantes de finitions de la structure. Acabados del armazón.



Counterstuhl.

Counter stool.

Chaise en hauteur comptoir.

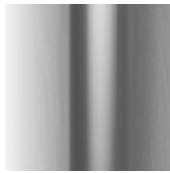
Silla de cajero.



50 Kunststoff
schwarz



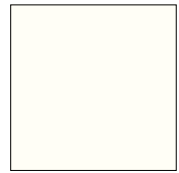
52 Aluminium
poliert



72 Aluminium
hochglanzpoliert



90 Schwarz
strukturmatt
beschichtet
(RAL 9011)



91 Weiß struktur-
matt beschichtet
(RAL 9016)



Drehstuhl mit Fünfarm-Fußkreuz, Aluminiumdruckguss.

Task chair with five-star base, die-cast aluminum.

Chaise pivotante avec croisillon de piétement à cinq branches en aluminium moulé sous pression.

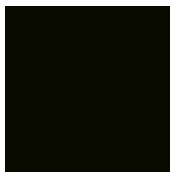
Silla giratoria con pie en estrella de cinco brazos de fundición de aluminio.



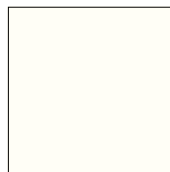
51 Glanzver-
chromt



79 Mattpoliert

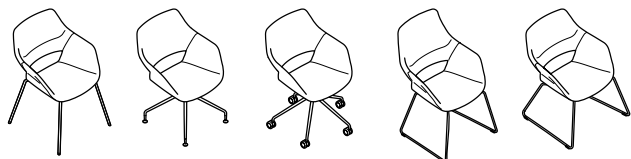


90 Schwarz
strukturmatt
beschichtet
(RAL 9011)



91 Weiß struktur-
matt beschichtet
(RAL 9016)

Occo Conference/Lounge Gestellausführungen. Frame version.
Variantes de finitions de la structure. Acabados del armazón.



Vierbeingestell, Vier- und Fünfsternfuß, Stahlrohr; Kufengestell Stahlrundstab.

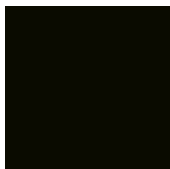
Four-leg base frame, four- and five-star base, tubular steel; Sled (skid) base steel rod.

Piètement à quatre pieds et en étoile à quatre ou à cinq branches en tube d'acier ;
piètement traîneau en fil d'acier.

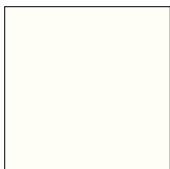
Armazón de cuatro patas y armazón con pie de estrella de cuatro o cinco radios de tubos de acero;
armazón de patín de vara de acero.



51 Glanzverchromt



90 Schwarz strukturmatt beschichtet (RAL 9011)



91 Weiß strukturmatt beschichtet (RAL 9016)



Vier- und Fünfarm-Fußkreuz, Aluminiumdruckguss.

Four- and Five-star base, die-cast aluminum.

Croissillon de piètement à quatre et cinq branches en aluminium moulé sous pression.

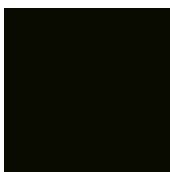
Pie en estrella de cuatro con cinco brazos de fundición de aluminio.



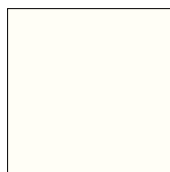
51 Glanzverchromt



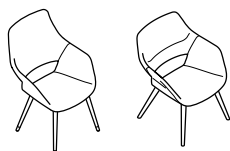
79 Mattpoliert



90 Schwarz strukturmatt beschichtet (RAL 9011)



91 Weiß strukturmatt beschichtet (RAL 9016)



Universalstuhl Vierbeingestell Massivholz.

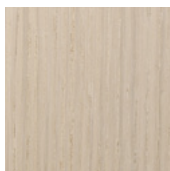
Multipurpose chair with solid wood four-leg frame.

Chaise multifonctions à quatre pieds en bois massif.

Silla multiusos de cuatro patas de madera maciza.



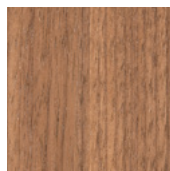
Eiche, natur geölt



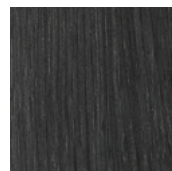
Eiche, weiß geölt



Eiche, schwarz lackiert



Nussbaum, natur geölt



Eiche, graphit gebeizt

Schalensfarben.

Grau (Pantone Cool Gray 10 C)
 Graubeige (Pantone 7530 C)
 Schwarz (RAL 9011)
 Weiß (RAL 9016)
 Smaragdgrün
 (Pantone 5477 C)
 Sienarot (Pantone 3523 C)

Shell colors.

Gray (Pantone Cool Gray 10 C)
 Warm gray (Pantone 7530 C)
 Graphite black (RAL 9011)
 White (RAL 9016)
 Emerald green
 (Pantone 5477 C)
 Sienna red (Pantone 5523 C)

Coloris de la coque.

Gris (Pantone Cool Gray 10 C)
 Gris-beige (Pantone 7530 C)
 Noir (RAL 9011)
 Blanc (RAL 9016)
 Vert émeraude (Pantone 5477 C)
 Terre de sienne
 (Pantone 3523 C)

Colores de la coquilla.

Gris (Pantone Cool Gray 10 C)
 Gris/beige (Pantone 7530 C)
 Negro (RAL 9011)
 Blanco (RAL 9016)
 Verde esmeralda
 (Pantone 5477 C)
 Siena (Pantone 5523 C)

Gestellausführungen.

50 Kunststoff schwarz
 51 Glanzverchromt
 52 Aluminium poliert
 72 Aluminium
 hochglanzpoliert
 79 Aluminium mattpoliert
 85 Grau strukturmatt
 beschichtet
 (Pantone Cool Gray 10 C)
 86 Graubeige
 strukturmatt beschichtet
 (Pantone 7530 C)
 90 Schwarz strukturmatt
 beschichtet (RAL 9011)
 91 Weiß strukturmatt
 beschichtet (RAL 9016)
 94 Smaragdgrün
 strukturmatt beschichtet
 (Pantone 5477 C)
 95 Sienarot
 strukturmatt beschichtet
 (Pantone 3523 C)
 Edelstahl gebürstet
 Massivholz
 Eiche, natur geölt
 Eiche, weiß geölt
 Eiche, graphit gebeizt
 Eiche, schwarz lackiert
 Nussbaum, natur geölt

Frame versions.

50 Black plastic
 51 Bright chrome-plated
 52 Polished aluminum
 72 High-luster polished
 aluminum
 79 Matte-polished aluminum
 85 Coated gray with a
 textured matte finish
 (Pantone Cool Gray 10 C)
 86 Coated gray-beige with a
 textured matte finish
 (Pantone 7530 C)
 90 Coated black with
 textured matte finish (RAL 9011)
 91 Coated white with a textured
 matte finish (RAL 9016)
 94 Coated emerald green
 with a textured matte finish
 (Pantone 5477 C)
 95 Coated sienna red with a
 textured matte finish
 (Pantone 3523 C)
 Brushed stainless steel
 Solid wood
 Oak, natural oiled finish
 Oak, white, oiled
 Oak, stained graphite
 Oak, lacquered black
 Walnut, natural oiled finish

Variantes de finitions de la structure.

50 Résine de synthèse,
 coloris noir
 51 Chromé brillant
 52 Aluminium poli
 72 Aluminium poli miroir
 79 Aluminium poli mat
 85 Laqué gris mat structuré
 (Pantone Cool Gray 10 C)
 86 Laqué gris-beige
 mat structuré
 (Pantone 7530 C)
 90 Laqué noir mat
 structuré (RAL 9011)
 91 Laqué blanc
 mat structuré (RAL 9001)
 94 Laqué vert émeraude
 mat structuré (Pantone 5477 C)
 95 Laqué terre de sienne
 mat structuré
 (Pantone 3523 C)
 Acier inoxydable brossé
 Bois massif
 Chêne, finition huilée naturelle
 Chêne, finition huilée, blanc
 Chêne teinté graphite
 Chêne teinté, noir
 Noyer, finition huilée naturelle

Acabados del armazón.

50 Plástico negro
 51 Cromado brillante
 52 Aluminio pulido
 72 Aluminio pulido brillante
 79 Aluminio pulido mate
 85 Gris mate texturizado
 (Pantone Cool Gray 10 C)
 86 Gris/beige mate texturizado
 (Pantone 7530 C)
 90 Negro mate texturizado
 (RAL 9011)
 91 Blanco mate texturizado
 (RAL 9016)
 94 Verde esmeralda
 mate texturizado
 (Pantone 5477 C)
 95 Siena mate texturizado
 (Pantone 3523 C)
 Acero inoxidable
 cepillado
 Madera maciza
 Roble, aceitado natural
 Roble, aceitado blanco
 Roble, barnizado grafito
 Roble, lacado en negro
 Madera de nogal, aceitado
 natural

Bezugsmaterialien.

Weitere Farben finden Sie in
 unserem Mediacenter.

Upholstery materials.

You can find additional colors
 in our media center.

Revêtements de l'assise.

Pour une présentation exhaus-
 sive des revêtements et coloris
 supplémentaires, consultez
 notre Mediacenter.

Tapicería.

Para ver todos los colores
 disponibles, viste el Media
 Center de Wilkhahn.

50826000 - UP

Wilkhahn Germany

Wilkening + Hahne GmbH+Co. KG, Fritz-Hahne-Straße 8, 31848 Bad Münder

Wilkhahn worldwide

Australia, Belgium, China, Germany, Spain, Hong Kong, Japan, Morocco, Netherlands, Austria, Poland, Switzerland, Singapore, South Africa, United Arab Emirates, United Kingdom, United States of America

wilkhahn.com