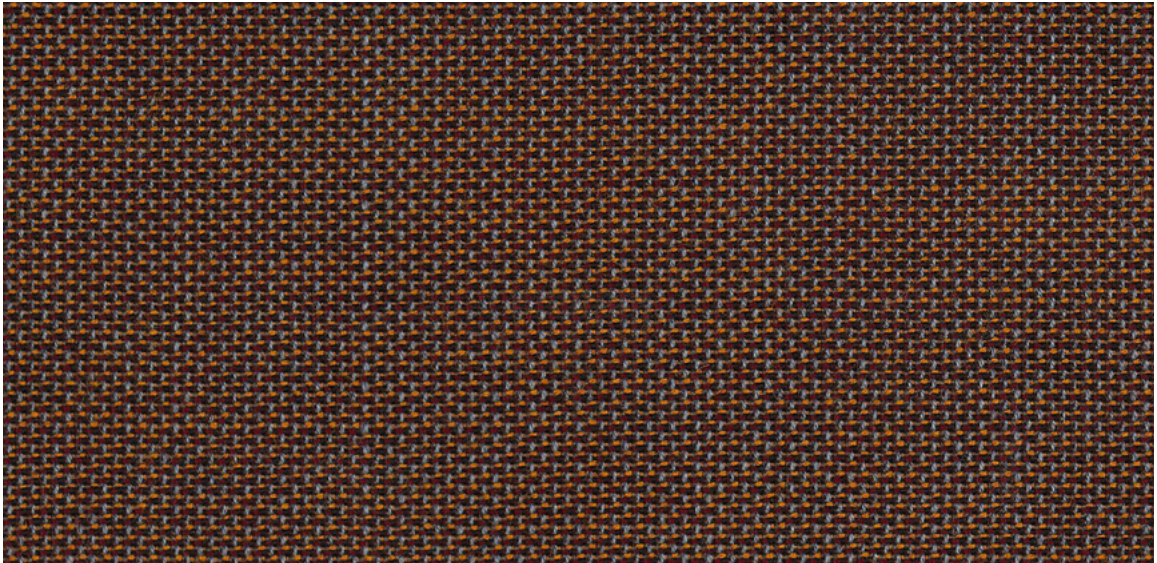
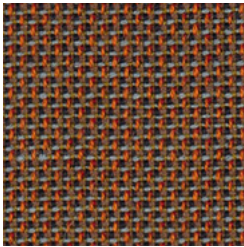


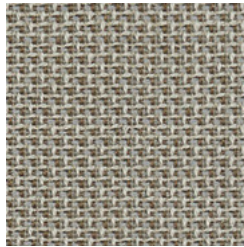
64 Morph. **Wilkhahn**



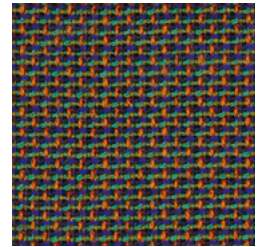
64/2103



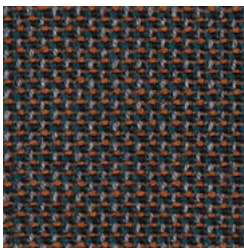
64/10101



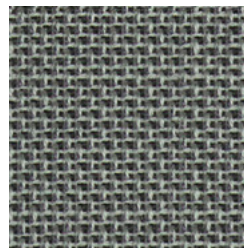
64/5101



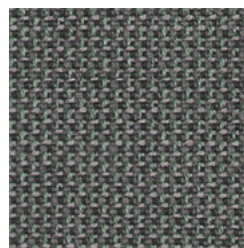
64/10103



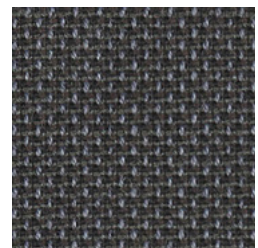
64/2102



64/4101

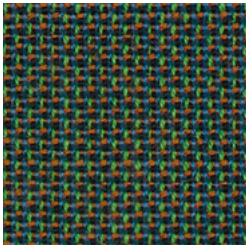


64/2101

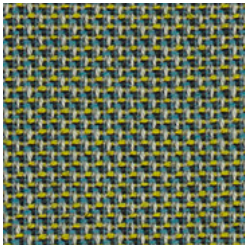


64/1101

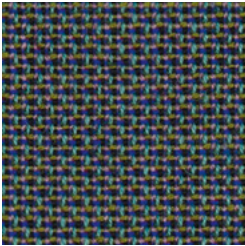
64 Morph.



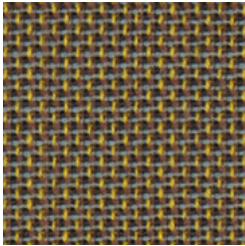
64/14101



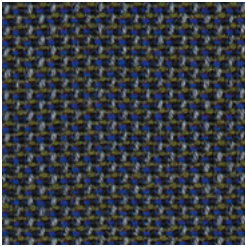
64/4102



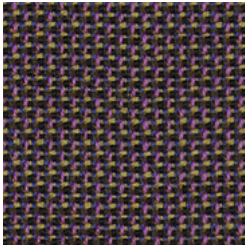
64/13101



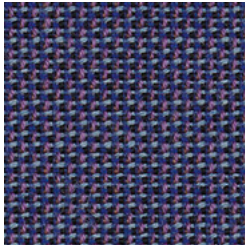
64/12102



64/2104



64/9101



64/9102

Die digitalen Muster weichen von den Originaltönen ab.  
The digital sample colours differ from the originals.  
Les échantillons numériques diffèrent du nuancier original.  
Los tonos de colores de las muestras en formato digital, varían de los originales.

**Beschreibung**

85% Neuseeland Wolle  
15% Polyamid  
475 g/dfd. m  
Breite 140 cm

**Prüfungsergebnisse**

Scheuerfestigkeit:  
200.000 Scheuerhübe,  
BS EN ISO 12947-2 (Martindale)  
Lichtechtheit:  
5-6, BS EN ISO 105-B02  
Pilling:  
4, BS EN ISO 12945-2  
Reibechtheit:  
Trocken 4-5, Nass 4-5  
EN ISO 105-X12  
Flammschutz:  
BS EN 1021 1&2 Cigarette  
and Match  
BS 5852 Part 1 0,1 Cigarette &  
match  
BS 5852 Crib 5  
CA TB 117-2013  
Schwerentflammbarkeit hängt  
vom verwendeten Schaum ab.

**Reinigung**

professionelle  
Trockenreinigung  
☒ ☒ ☒ ☒ ☒ ☒

**Description**

85% New Zealand wool  
15% polyamide  
475 g/lin. m  
width 140 cm (55")

**Test results**

Abrasion resistance:  
200,000 rubs,  
BS EN ISO 12947-2 (Martindale)  
Lightfastness:  
5-6, BS EN ISO 105-B02  
Pilling:  
4, BS EN ISO 12945-2  
Fastness to rubbing:  
Dry 4-5, wet 4-5  
EN ISO 105-X12  
Flame resistance:  
BS EN 1021 1&2 Cigarette  
and Match  
BS 5852 Part 1 0,1 Cigarette &  
match  
BS 5852 Crib 5  
CA TB 117-2013  
Flame retardancy depends on  
the foam used.

**Cleaning**

Professional dry cleaned  
☒ ☒ ☒ ☒ ☒ ☒

**Description**

85% laine de Nouvelle-Zélande  
15% polyamide  
475 g/m. l.  
laize 140 cm

**Résultats des tests**

Résistance à l'abrasion :  
200 000 révolutions,  
BS EN ISO 12947-2 (Martindale)  
Résistance à la lumière :  
5-6, BS EN ISO 105-B02  
Boulochage :  
4, BS EN ISO 12945-2  
Solidité au frottement :  
Sec 4-5, humide 4-5  
EN ISO 105-X12  
Tenue au feu :  
BS EN 1021 1&2 Cigarette et  
allumette  
BS 5852 Partie 1 0,1 Cigarette  
et allumette  
BS 5852 Berceau 5  
CA TB 117-2013  
L'inflammabilité dépend de la  
mousse utilisée.

**Nettoyage**

Nettoyage à sec professionnel  
☒ ☒ ☒ ☒ ☒ ☒

**Descripción**

85% lana neozelandesa  
15% poliamida  
475 g/lin. m  
ancho: 140 cm

**Pruebas**

Resistencia a la abrasión:  
200.000 golpes,  
BS EN ISO 12947-2 (Martindale)  
Resistencia a la luz:  
5-6, BS EN ISO 105-B02  
Pilling:  
4, BS EN ISO 12945-2  
Solidez al rozamiento:  
Seco 4-5, húmedo 4-5  
EN ISO 105-X12  
Protección contra llamas:  
BS EN 1021 1&2 Cigarette  
and Match  
BS 5852 Part 1 0,1 Cigarette &  
match  
BS 5852 Crib 5  
CA TB 117-2013  
La espuma usada determina  
la capacidad de protección  
contra llamas.

**Limpieza**

Limpieza profesional en seco  
☒ ☒ ☒ ☒ ☒ ☒



DK/016/024

50822000 - BH

**Wilkhahn Germany**

Wilkening + Hahne GmbH+Co. KG, Fritz-Hahne-Straße 8, 31848 Bad Münder

**Wilkhahn worldwide**

Australia, Belgium, China, Deutschland, España, Hong Kong, Japan, Maroc, Nederland, Österreich, Polska, Schweiz, Singapore, South Africa, United Arab Emirates, United Kingdom, United States of America

**wilkhahn.com**