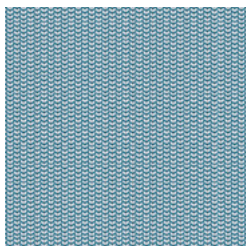


37 Atlantic. **Wilkhahn**
42 ReForm.

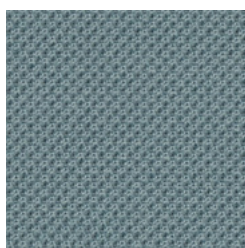
37 Atlantic 42 ReForm



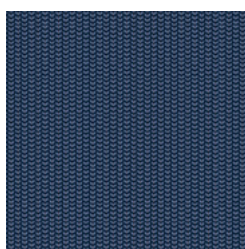
42/5034



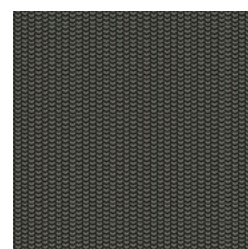
37/6250



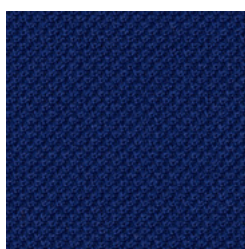
37/0334



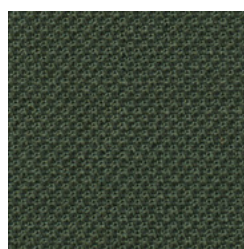
42/7741



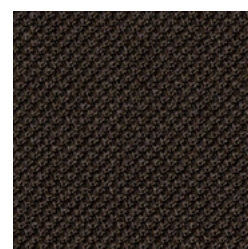
42/7765



37/6041

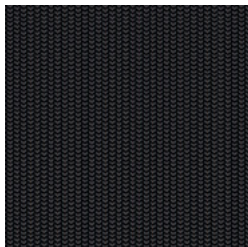


37/8277

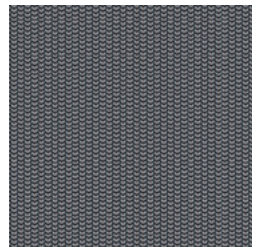


37/1165

Die digitalen Muster weichen von den Originaltönen ab.
The digital sample colours differ from the originals.
Les échantillons numériques diffèrent du nuancier original.
Los tonos de colores de las muestras en formato digital, varían de los originales.



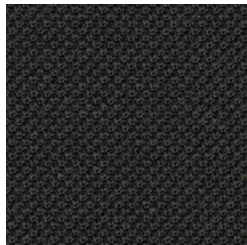
42/3399



42/1133



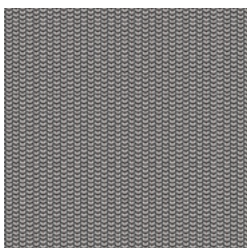
37/0999



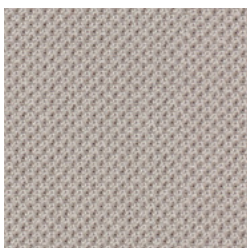
37/0333



37/0011



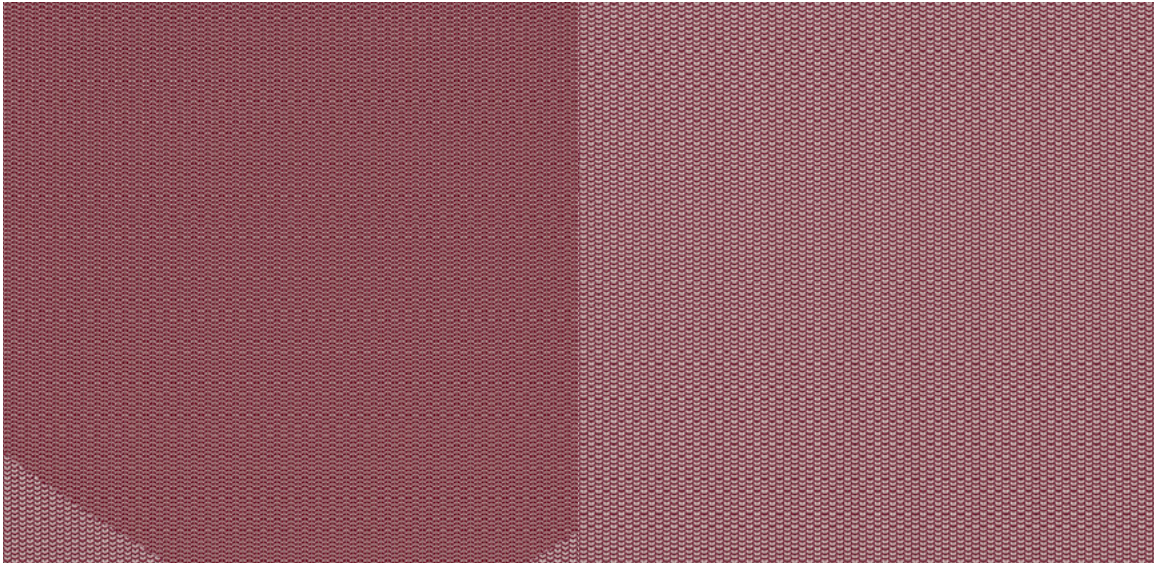
42/4142



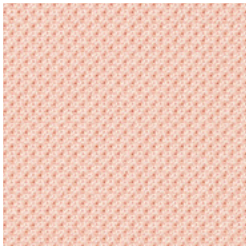
37/0141



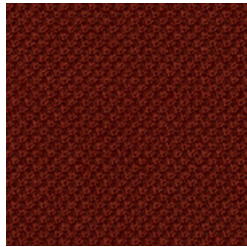
37/0142



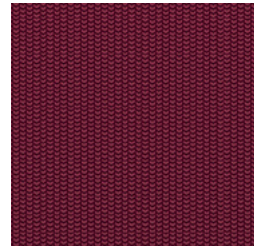
42/1792



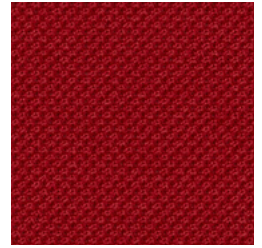
37/4117



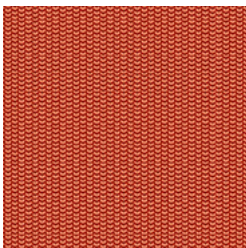
37/4092



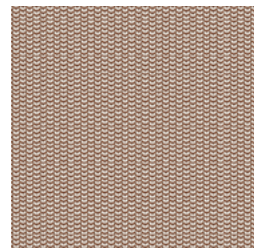
42/8937



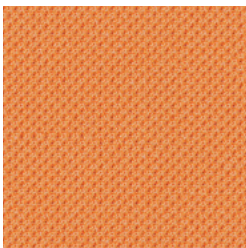
37/4089



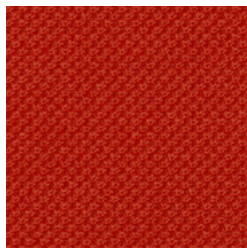
42/2793



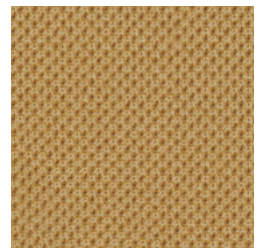
42/0070



37/3127



37/4093



37/1270

42 ReForm

Beschreibung

100% post-consumer recycled Polyester
379–712 g/m²

Prüfungsergebnisse

Lichtechtheit:
4–5, BSEN ISO 105-B02,
Methode 2
Reibechtheit:
Trocken 4, nass 4
EN ISO 105-X12

Reinigung

Festverspannte Bezüge:
Regelmäßig absaugen
Professionelle
Trockenreinigung

Description

100% post-consumer recycled polyester
379–712 g/m²

Test results

Lightfastness:
4–5, BSEN ISO 105-B02,
method 2
Fastness to rubbing:
Dry 4, wet 4
EN ISO 105-X12

Cleaning

Permanent covers:
Vacuum regularly
have dry cleaned

Description

100% Polyester recyclé post-consommation
379–712 g/m²

Résultats des tests

Résistance à la lumière :
4–5, BSEN ISO 105-B02,
Méthode 2
Solidité au Frottement :
Sec 4, humide 4
EN ISO 105-X12

Nettoyage

Housses tendues :
Aspirer régulièrement
nettoyage à sec
professionnel

Descripción

100% Poliéster reciclado post-consumo
379–712 g/m²

Pruebas

Resistencia a la luz:
4–5, BSEN ISO 105-B02,
método 2
Solidez al rozamiento:
Seco 4, húmedo 4
EN ISO 105-X12

Limpieza

Tapicería fija:
Aspirar regularmente
limpieza profesional en
seco


37 Atlantic

Beschreibung
100% Polyester
530 g/lf.d. m
Breite 150 cm

Prüfungsergebnisse

Scheuerfestigkeit:
110.000 Scheuerhübe,
BS EN ISO 12947-2 (Martindale)
Lichtechtheit:
5-7, BS EN ISO 105-B02,
Methode 2
Pilling:
4-5, BS EN ISO 12945-2
Reibechtheit:
Trocken 4-5, nass 4-5
EN ISO 105-X12
Flammschutz:
EN 1021-1/-2
ÖNORM A3800-1
ÖNORM B 3825
ASTM E84 Class 1
CAT B117-2013

Reinigung


Festverspannte Bezüge:
Regelmäßig absaugen
Professionelle
Trockenreinigung
Abnehmbare Bezüge:


Description
100 % Polyester
530 g/lin. m
Width 150 cm (59")

Test results

Abrasion resistance:
110.000 rubs, BS EN ISO 12947-2
(Martindale)
Lightfastness:
5-7, BS EN ISO 105-B02,
method 2
Pilling:
4-5, BS EN ISO 12945-2
Fastness to rubbing:
Dry 4-5, wet 4-5
EN ISO 105-X12
Flame resistance:
CAT B117-2013
EN 1021-1/-2, If mounted on
suitable CMHR foam
BS 476 Part 7, Class 1
ASTM E84 Class 1

Cleaning


Permanent covers:
Vacuum regularly
have dry cleaned
Replaceable covers:


Description
100% Polyester
530 g/m. L
Largeur 150 cm

Résultats des tests

Résistance à l'abrasion :
110.000 frottements,
BS EN ISO 12947-2 (Martindale)
Résistance à la lumière :
5-7, BS EN ISO 105-B02,
Méthode 2
Boulochage :
4-5, BS EN ISO 12945-2
Solidité au Frottement :
Sec 4-5, humide 4-5
EN ISO 105-X12
Tenue au feu :
CAT B117-2013
EN 1021-1/-2, Si monté sur une
mousse CMHR appropriée
BS 476 Part 7, Class 1
ASTM E84 Class 1

Nettoyage

Housses tendues :
Aspirer régulièrement
nettoyage à sec professionnel
Housses amovibles :


Descripción
100 % Poliéster
530 g/lin. m
Ancho 150 cm

Pruebas

Resistencia a la abrasión:
110.000 golpes,
BS EN ISO 12947-2 (Martindale)
Resistencia a la luz:
5-7, BS EN ISO 105-B02,
método 2
Pilling:
4-5, BS EN ISO 12945-2
Solidez al rozamiento:
Seco 4-5, húmedo 4-5
EN ISO 105-X12
Protección contra llamas:
CAT B117-2013
EN 1021-1/-2, Si se monta sobre
una espuma CMHR adecuada
BS 476 Part 7, Class 1
ASTM E84 Class 1

Limpieza

Tapicería fija:
Aspirar regularmente
limpieza profesional en seco
Tapicería intercambiable:




50849000 - BH

Wilkhahn Germany

Wilkening + Hahne GmbH+Co. KG, Fritz-Hahne-Straße 8, 31848 Bad Münder

Wilkhahn worldwide

Australia, Belgium, China, Deutschland, España, Hong Kong, Japan, Maroc, Nederland, Österreich, Polska, Schweiz, Singapore, South Africa, United Arab Emirates, United Kingdom, United States of America

wilkhahn.com