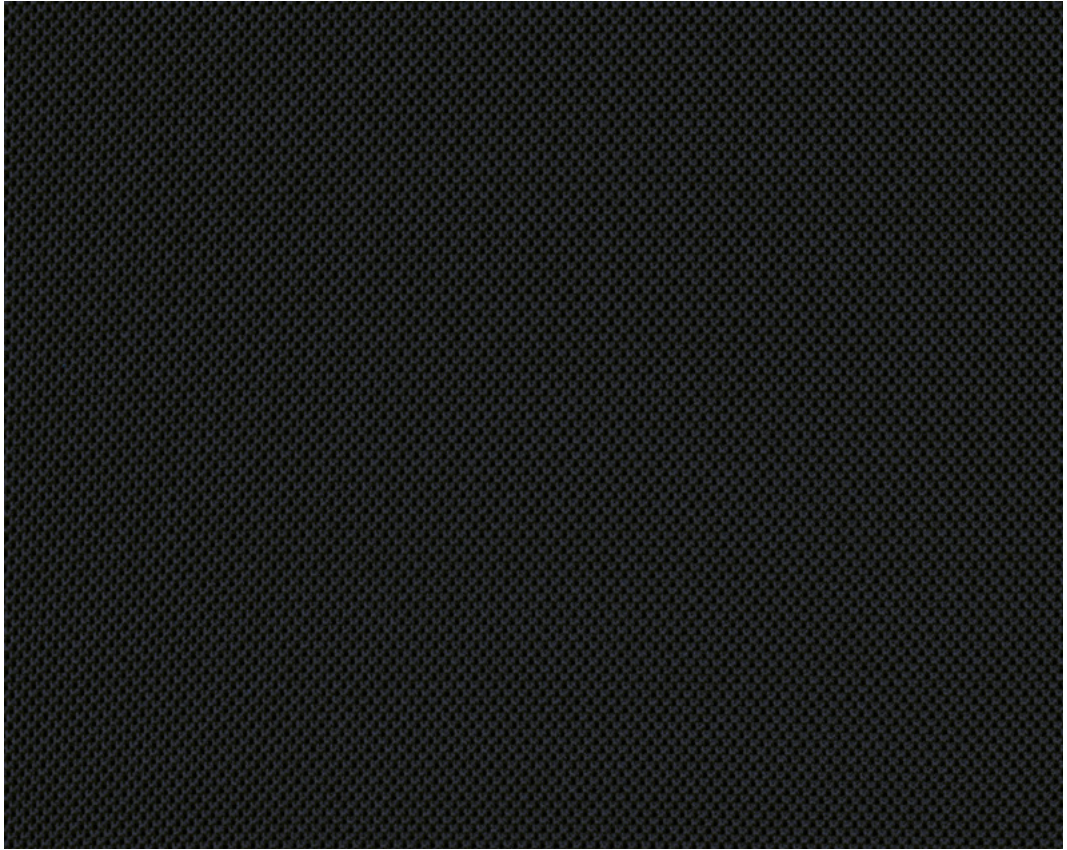


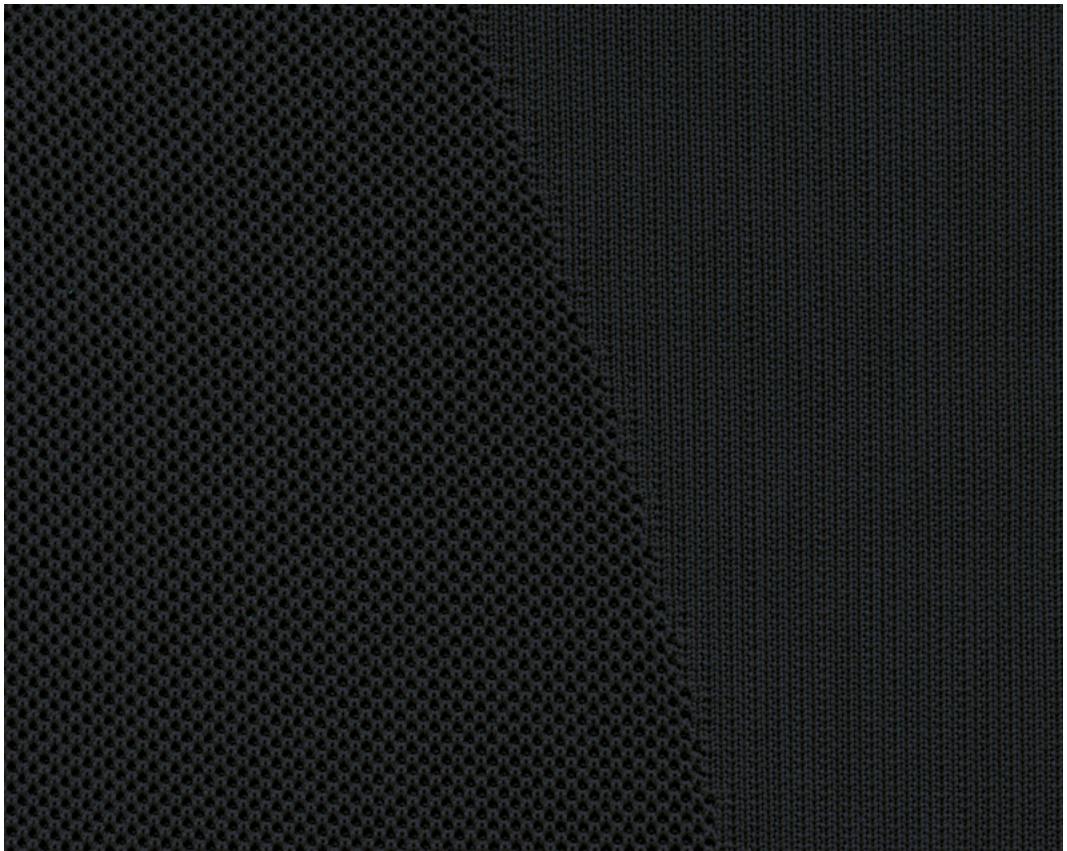
37 Racer. **Wilkhahn**

ATLANTIC SCREEN by Gabriel

41 Formstrick.

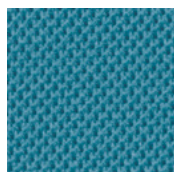


37/25

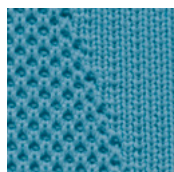


41/25

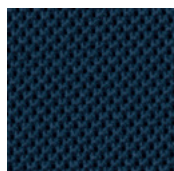
37 Racer. 41 Formstrick.



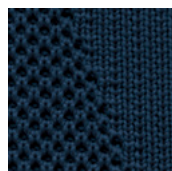
37/63



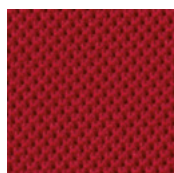
41/63



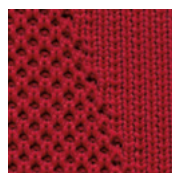
37/57



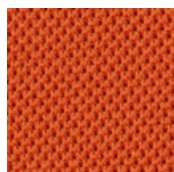
41/57



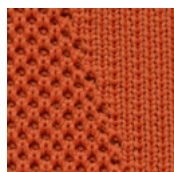
37/89



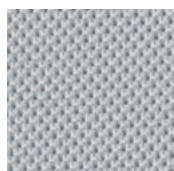
41/89



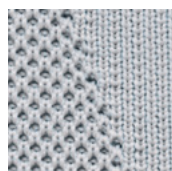
37/34



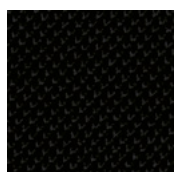
41/34



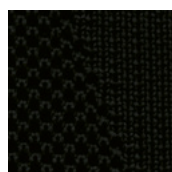
37/95



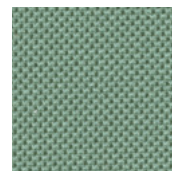
41/95



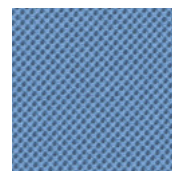
37/99



41/99



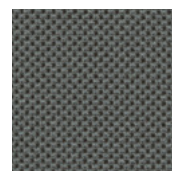
37/7015



37/6095



37/1078



37/0011

Racer

Beschreibung

100% Polyester
440 g/lfd. m, Breite 170 cm

Prüfungsergebnisse

Scheuerfestigkeit:
90.000 Scheuerhübe,
BS EN 14465,
BS EN ISO 12947-2 (Martindale)
Lichtechtheit:
5-7, BS EN ISO
105-B02 Methode 2
Pilling:
4-5, BS EN ISO 12945-2
Reibechtheit:
Trocken 4-5, Nass 4-5,
EN ISO 105-X12
Flammschutz:
EN 1021-1 (CMHR)
EN 1021-2 (CMHR)
BS 476 Part 7, class 1
CA TB 117-2013
ASTM E 84 Class 1
Schwerentflammbarkeit hängt
vom verwendeten Schaum ab.

Reinigung

regelmäßig absaugen,
professionelle
Trockenreinigung



Formstrick

Beschreibung

100% Polyamid
Gewicht: 750g/m²

Prüfungsergebnisse

Scheuerfestigkeit:
200.000 Scheuerhübe,
DIN EN ISO 12947-2
(Martindale)
Lichtechtheit:
4, DIN EN ISO
105-B02 Methode 2
Pilling:
4-5, DIN EN ISO 12945-2
Reibechtheit:
Trocken 4, Nass 3, DIN EN ISO
105-X12
Flammschutz:
auf Anfrage

Reinigung

Regelmäßig absaugen, pro-
fessionelle Trockenreinigung.
Die Spannung von Formstrick
kann bei hoher Feuchtigkeit
leicht nachlassen, gewinnt
beim Trocknen aber wieder die
ursprüngliche Festigkeit.

Description

100% Polyester
440 g/lin. m, width 170 cm (63")

Test results

Abrasion:
90,000 rubs,
BS EN 14465,
BS EN ISO 12947-2 (Martindale)
Lightfastness:
5-7, BS EN ISO
105-B02 Method 2
Pilling:
4-5, BS EN ISO 12945-2
Fastness to rubbing:
dry 4-5, wet 4-5,
EN ISO 105-X12
Flame resistance:
EN 1021-1 (CMHR)
EN 1021-2 (CMHR)
BS 476 Part 7, class 1
CA TB 117-2013
ASTM E 84 Class 1
Flame retardancy depends
on the foam used.

Cleaning

periodical vacuum cleaning,
professional cleaning
with dry foam



Descriptif

100 % Polyester
440 g/m, laize 170 cm

Résultats des tests

Résistance à l'abrasion :
90 000 révolutions
selon BS EN 14465,
BS EN ISO 12947-2 (Martindale)
Résistance à la lumière :
5-7, BS EN ISO
105-B02 méthode 2
Boulochage :
4-5, BS EN ISO 12945-2
Résistance au frottement :
à sec 4-5, mouillé 4-5,
EN ISO 105-X12
Tenue au feu :
EN 1021-1 (CMHR)
EN 1021-2 (CMHR)
BS 476 Part 7, class 1
CA TB 117-2013
ASTM E 84 Class 1
L'inflammabilité dépend de la
mousse mise en œuvre.

Entretien

aspirer régulièrement,
nettoyage à sec
professionnel



Descripción

100% Poliéster
440 g/m de 170 cm de ancho

Pruebas

Resistencia contra rozamiento:
90.000 golpes, BS EN 14465,
BS EN ISO 12947-2
(Martindale)
Resistencia a la luz:
5-7, BS EN ISO
105-B02 método 2
Pilling:
4-5, BS EN ISO 12945-2
Solidez al rozamiento:
seco 4-5, húmedo 4-5,
EN ISO 105-X12
Protección contra llamas:
EN 1021-1 (CMHR)
EN 1021-2 (CMHR)
BS 476 Part 7, class 1
CA TB 117-2013
ASTM E 84 Class 1
La protección contra llamas
depende de la espuma utilizada.

Limpieza

aspirar regularmente,
limpieza profesional
en seco.



50807000 - BH

Wilkhahn Germany

Wilkening + Hahne GmbH+Co. KG, Fritz-Hahne-Straße 8, 31848 Bad Münder

Wilkhahn worldwide

Australia, Belgium, China, Deutschland, España, Hong Kong, Japan, Maroc, Nederland, Österreich, Polska, Schweiz, Singapore, South Africa, United Arab Emirates, United Kingdom, United States of America

wilkhahn.com