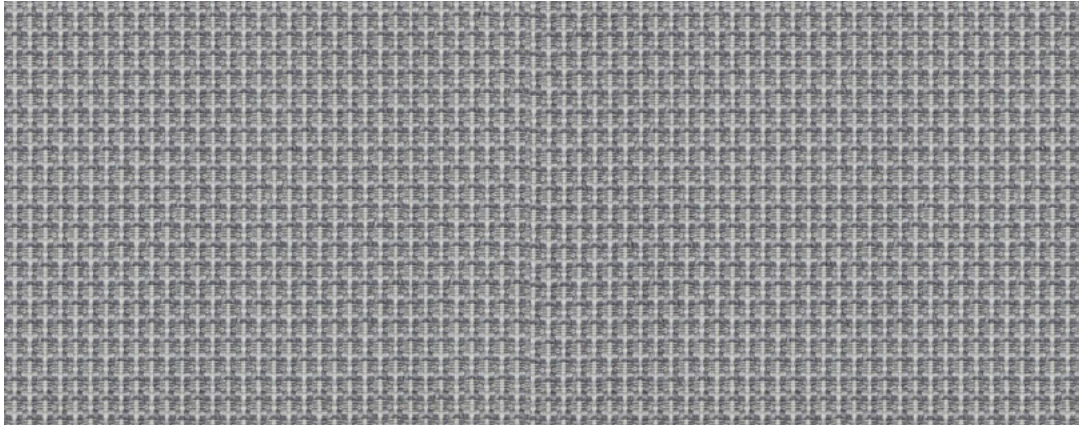
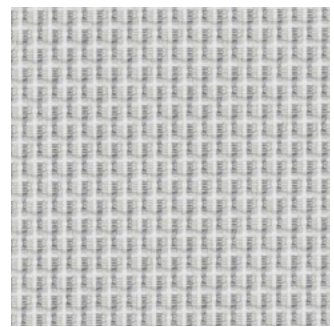


34 Vivid. **Wilkhahn**



34/1201

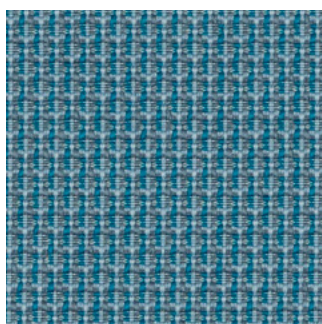


34/1001

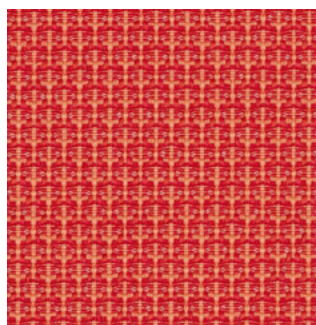


34/1401

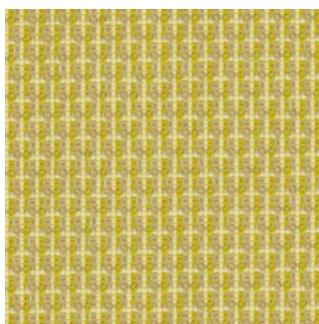
34 Vivid.



34/1901



34/1601



34/1701

Beschreibung

80% post-consumer recycled Polyester
20% Elastomer
320g/lf. m, Breite 140 cm

Prüfungsergebnisse

Scheuerfestigkeit:
100.000 Scheuerhübe,
BS EN ISO 12947-2 (Martindale)
Lichtechtheit: 6-8
BS EN ISO 105-B02 Methode 2
Pilling:
5, BS EN ISO 12945-2
Reibechtheit:
Trocken 4-5, Nass 4-5
EN ISO 105-X12
Flammschutz:
EN 1021-1
EN 1021-2 (CMHR)
BS 5852 Part 1 (CMHR)
CA TB 117-2013
Schwerentflammbarkeit hängt vom verwendeten Schaum ab.

Reinigung

Festverspannte Bezüge:
regelmäßig absaugen,
professionelle Trockenreinigung
Abnehmbare Bezüge:



Description

80% post-consumer recycled Polyester
20% Elastomer
320g/lin. m, width 140 cm (55")

Test results

Abrasion:
100.000 rubs,
BS EN ISO 12947-2 (Martindale)
Lightfastness: 6-8,
BS EN ISO 105-B02 Method 2
Pilling:
5, BS EN ISO 12945-2
Fastness to rubbing:
Wet 4-5, Dry 4-5,
EN ISO 105-X12
Flame resistance:
EN 1021-1
EN 1021-2 (CMHR)
BS 5852 Part 1 (CMHR)
CA TB 117-2013
Flame retardancy depends on the foam used.

Cleaning

Fixed covers:
periodical vacuum cleaning,
professional cleaning with dry foam
removable covers:



Description

80% post-consumer recycled Polyester
20% Elastomer
320g/m. l, laize 140 cm

Résultats des tests

Résistance à l'abrasion:
100.000 revolutions selon,
BS EN ISO 12947-2 (Martindale)
Solidité à la lumière : 6-8
BS EN ISO 105-B02 méthode 2
Boulochage:
5, BS EN ISO 12945-2
Solidité au frottement :
Mouillé 4-5, Sec 4-5
EN ISO 105-X12
Tenue au feu :
EN 1021-1
EN 1021-2 (CMHR)
BS 5852 Part 1 (CMHR)
CA TB 117-2013
L'inflammabilité dépend de la mousse mise en œuvre.

Entretien

Revetements non amovibles:
aspirer régulièrement,
nettoyage à sec professionnel
Revetements amovibles:



Descripción

80% post-consumer recycled Polyester
20% Elastomer
320 g/lin.m ancho 140 cm

Pruebas

Resistencia a la abrasión:
100.000 golpes,
BS EN ISO 12947-2 (Martindale)
Solidez a la luz: 6-8
BS EN ISO 105-B02 méthode 2
Pilling:
5, BS EN ISO 12945-2
Solidez al rozamiento:
Húmedo 4-5, Seco 4-5,
EN ISO 105-X12
Protección contra llamas:
EN 1021-1
EN 1021-2 (CMHR)
BS 5852 Part 1 (CMHR)
CA TB 117-2013
La protección contra llamas depende de la espuma utilizada.

Limpieza

Tapizados fijos:
aspirar regularmente,
limpieza profesional en seco
Tapizados intercambiables:



50835000 - BH

Wilkhahn Germany

Wilkening + Hahne GmbH+Co. KG, Fritz-Hahne-Straße 8, 31848 Bad Münder

Wilkhahn worldwide

Australia, Belgium, China, Deutschland, España, Hong Kong, Japan, Maroc, Nederland, Österreich, Polska, Schweiz, Singapore, South Africa, United Arab Emirates, United Kingdom, United States of America

wilkhahn.com