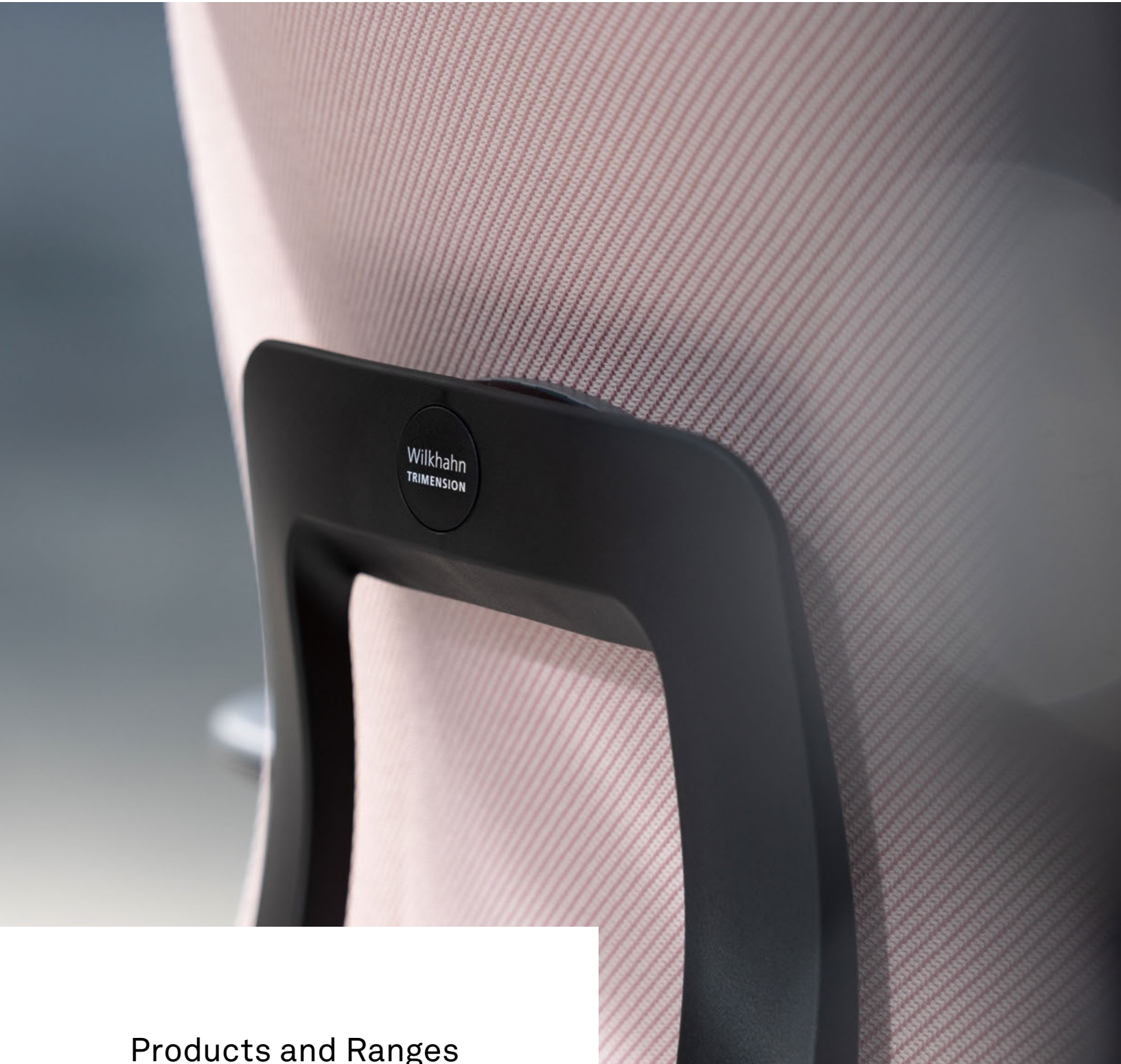



# Wilkhahn



Products and Ranges

A close-up photograph of a modern office chair. The backrest is covered in a dark, finely textured fabric. The seat is a lighter, neutral color with a similar texture. The chair's armrest is visible on the right side, featuring a dark, rounded top. The background is a soft, out-of-focus grey, suggesting an office environment.

**“We believe in the power of good design”**  
Which is why we’re passionate about sustainable office furnishings worldwide that boost health, foster well-being and creativity and empower people to do their jobs well.

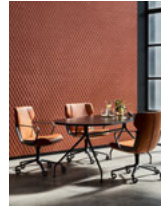
## Contents

---

### Seating



**7**  
Task and  
visitor chairs



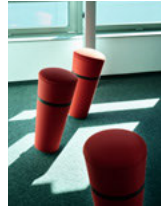
**27**  
Conference  
chairs



**45**  
Multipurpose  
chairs



**61**  
Soft seating



**77**  
Sit-stand stools

---

### Tables



**83**  
Mobile and  
flexible tables



**99**  
Stand-alone  
and confer-  
ence tables



**107**  
Power  
solutions

---

### Workshop tools



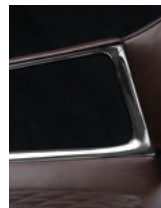
**111**  
Hybrid collaboration  
as corporate excellence

---

### About Wilkhahn



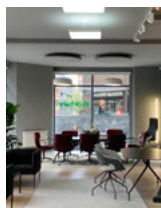
**119**  
Company and  
history



**124**  
Design, quality  
and standards



**127**  
Sustainability



**130**  
Wilkhahn  
worldwide



**132**  
Reference  
projects and  
awards



**136**  
Index and  
service



## Foreword

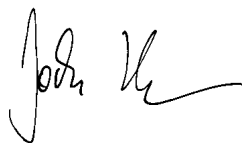
This catalog might beg the question whether yet more new things are really necessary. After all, too few products isn't a problem the world has. On the contrary, because now (more than ever) we need to treat our beautiful planet's resources sparingly...

Which is why modernism's plea has been "less is more." An approach that's part of our company's DNA. Nowadays, "fewer, but better products" would be a good interpretation of the maxim. Therefore, we've spent decades making products that stand apart for their first-class materials and excellent craftsmanship. We focus on the essentials to produce furniture that's timeless. And whose functionality will be up to date tomorrow and the day after.

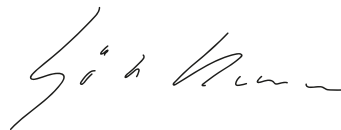
These three factors mean true sustainability. Because our products last and last. Because they remain attractive and are lifelong companions. Because pre-loved items are sought after and can be repaired, even decades on. In line with our ecological design concept, it goes without saying that most of our components are recyclable. Rolled out back in 1992, this option was already pivotal to us winning the German Environmental Prize in 1996.

Therefore, alongside new and improved products, this catalog also includes ones that have stood the test of time for decades. To avoid wasting too many resources, we're providing a concise overview of our portfolio. You can find more detailed background information and current design options at [wilkhahn.com](http://wilkhahn.com).

We're excited to take you on a short stroll through our product ranges. We hope you enjoy it and gain some inspiration for products that make the world a better place.



Dr. Jochen Hahne  
Partner and chairman of the  
supervisory board

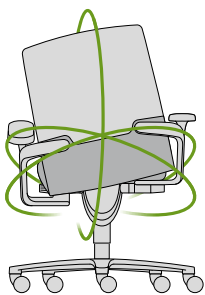


Götz Stamm  
CEO

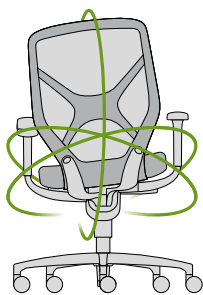


## Task and visitor chairs

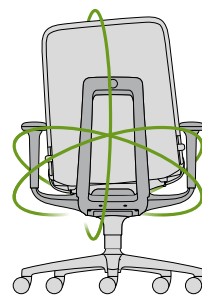
Removing the complexity from sitting was the legendary FS-Line's motto. The range set out to encourage dynamic sitting worldwide. Modus was the next equally ecologically trailblazing chair. And the Neos range ensured perfect dynamic sitting with customized settings. For an even more potent response to human beings' lack of physical activity, we collaborated with the German Sport University Cologne. This partnership taught sitting to walk (so to speak) and led to our multi-award-winning, free-to-move ranges with their three-dimensional Trimension® technology. Today, they are considered the new worldwide benchmarks in healthy, performance-enhancing dynamic sitting.



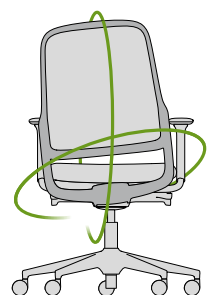
**ON** – the prestigious one



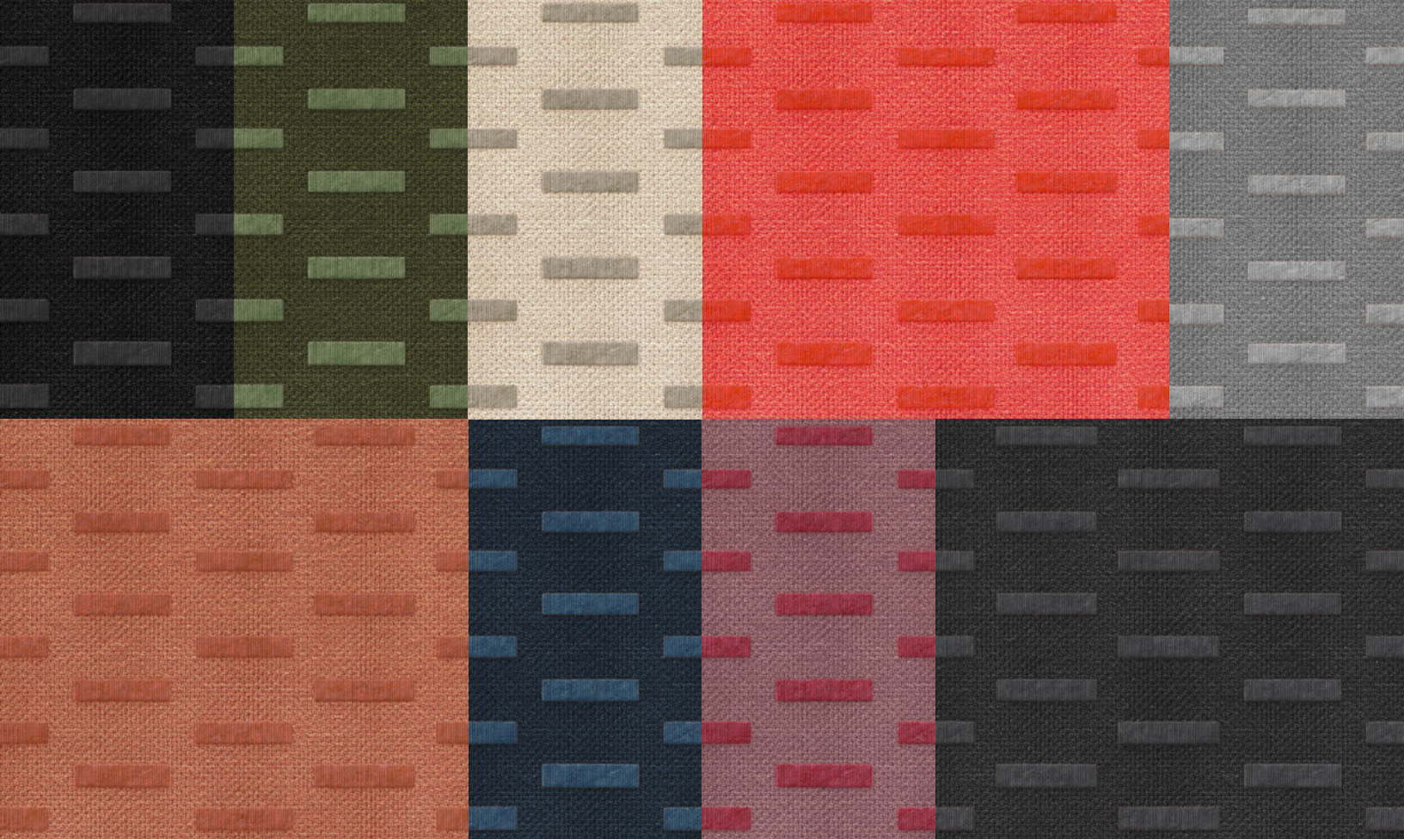
**IN** – the athletic one



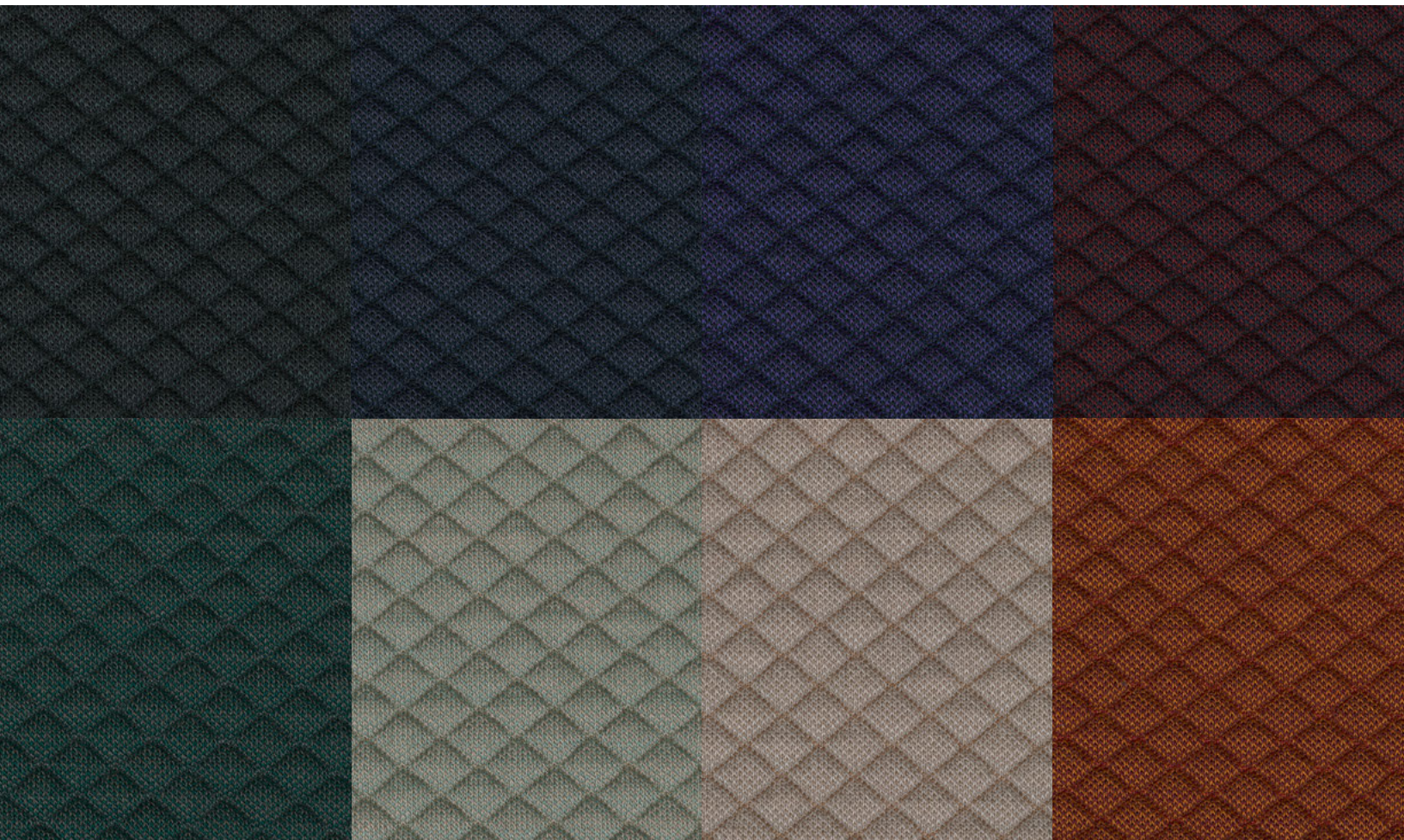
**AT** – the all-rounder



**ME** – the tailor-made one

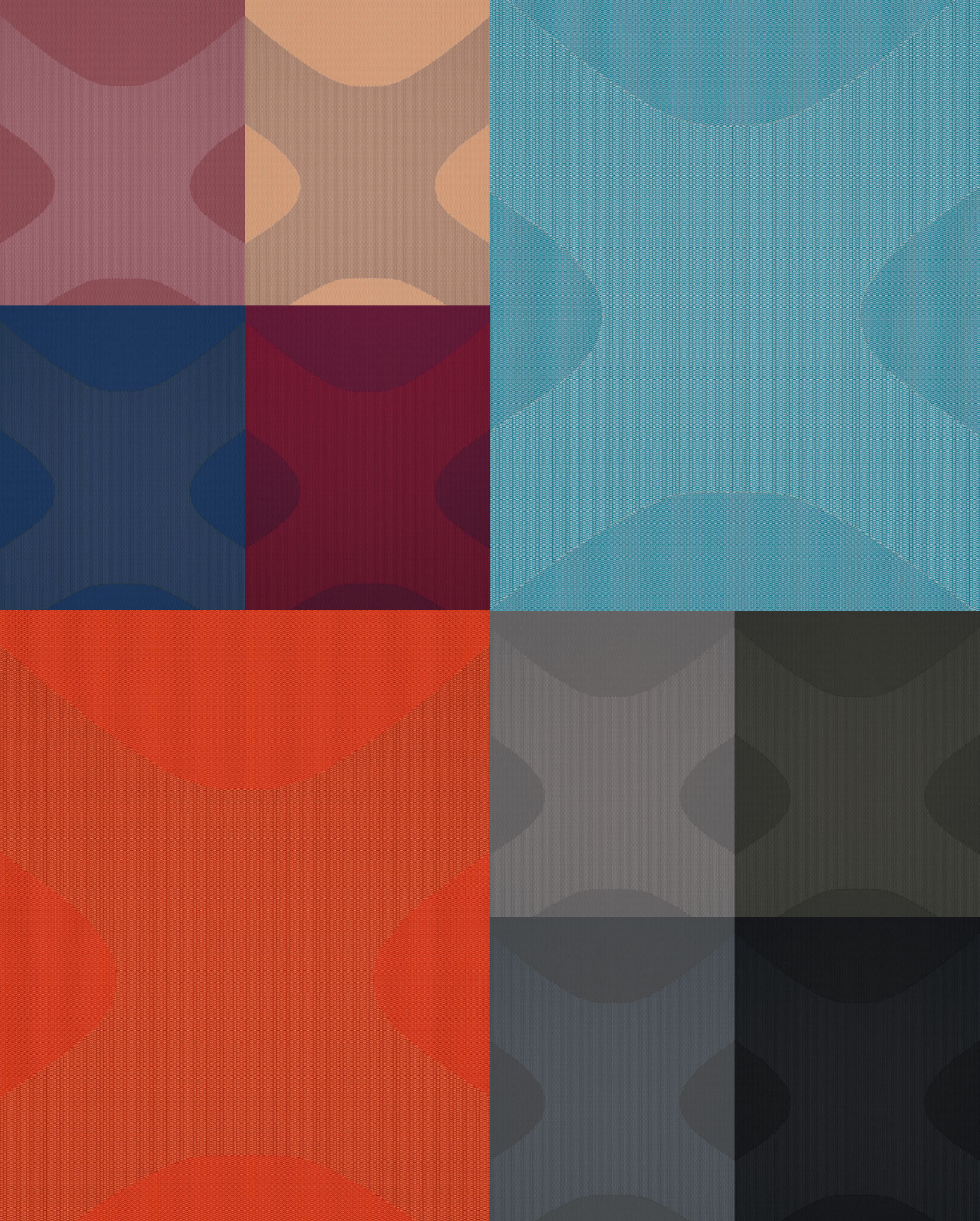


Exclusive, made-to-measure fabrics for ON Casual: **59 Cubes** volcano black, olive green, sandy beige, coral red, crystal gray, cinnamon brown, polar night, wild berry, dark gray...



... **97 Mosaic** black, midnight blue, blue-violet, wine red, mossy green, sage, light taupe, copper brown





An exclusive knitted cover for IN: **42 ReForm** berry, dune, glacier, atlantis, ruby, lava, pebble, forest, arctic gray, black





AT 187/7, design: Wilkhahn, cover: 51 Oceanic, photo: Oliver Oetli





Neos 181/6, design: wiege, seat cover: 60 Blend





FS-Line 211/8, design: Klaus Franck, Werner Sauer, cover: 60 Blend, photo: Frank Schinski/OSTKREUZ





From 10/25: **Wi Chair** 228/20, design: Wilkhahn, photo: Ludwig Schöpfer/StudioTusch





174/7  
Task chair  
medium height backrest



175/7  
Task chair  
high backrest



175/7  
Task chair  
high backrest, headrest



175/73  
Task chair  
high backrest  
contoured upholstery



175/73  
Task chair  
high backrest, headrest con-  
toured upholstery



174/71  
Task chair, medium height  
backrest  
management grade upholstery



175/71  
Task chair  
high backrest  
management grade upholstery



175/71  
Task chair  
high backrest, headrest  
management grade upholstery



174/74  
Task chair  
medium-high backrest



175/74  
Task chair  
high backrest



171/7  
Meeting/visitor chair  
medium-high backrest (with  
management grade upholstery  
171/71)



178/7  
Cantilever chair  
standard height backrest (with  
managementgrade upholstery  
178/71)

A four-wheeled trolley for eight cantilever chairs is available.

**170 range.** design: wiege. This multi-award-winning product family comes with a sleek silhouette, high-quality craftsmanship and precisely stitched covers. A winner of the Federal Ecodesign Award, it offers healthy 3D sitting and a certain cachet. Three adjustable backrest heights, four types of upholstery (Fiberflex, extra padding, contoured stitching, and management grade upholstery) and three 3D armrest types add up to 36 basic designs for the task chairs alone. Then there's the ON Casual range, which features exclusive knitted covers. ON versions are also available for 24-hour use (175/8).

# IN.



184/7  
Task chair



184/7  
Task chair



184/72  
Task chair ESP  
(elevated sitting position)



184/1  
Counter chair

**184 range**, design: wiege. Scientific case studies verify that IN stimulates those all-important muscles in office workers' backs. Swivel arms that function separately of one another interact ideally with the seat-back element. This seat-back component was crafted using two-component technology and with its the ReForm form-fit knit cover. With a forward tilt that can be activated, counter pressure for people weighing up to 140 kg and adjustment options for armrests, lumbar support, and seat depth. Also available in versions appropriate for 24-hour use (British Standard) (184/8).

# AT.



187/7  
Task chair  
medium height backrest



187/71  
Task chair, medium height  
backrest,  
covered with mesh



187/72  
ESP task chair  
(elevated sitting position)



187/73  
ESP task chair



187/8  
Task chair  
high backrest



187/9  
Task chair, high backrest,  
headrest and neck rest



187/1  
Counter chair



187/11  
Counter chair mesh

**187 range**, design: Wilkhahn. The automatic weight adjustment, a wide range of features and seminal design make AT the ideal free-to-move office chair for hot desking. It's also the number one choice for alternating setups in modern office environments. Optional backrest covers for the models with backrest shells. As a result, the design options are almost limitless.

# ME.



164/07  
Task chair  
mesh backrest



164/72  
Task chair  
mesh backrest  
ESP (elevated sitting position)



164/01  
Counter chair  
mesh backrest  
headrest



165/07  
Task chair  
upholstered mesh backrest



165/72  
Task chair  
mesh backrest  
ESP (elevated sitting position)



165/01  
Task chair  
upholstered mesh backrest

**164 range**, design: Wilkhahn. Thanks to this modular solution, ME meets virtually all customer requirements and international certification standards. Depending on the design and functional requirements, you can configure the furniture to suit any space. Its broad adjustment ranges make it ideal for very short and tall users. In the appropriate version, ME meets the very extensive new DIN EN 1335 Type AX European standard.

# FS-Line | FS Management.



211/8  
Task chair  
standard height backrest



213/8  
Task chair  
high backrest



220/9  
Task chair  
high backrest  
with top stitching to create  
segments



220/7  
Conference/visitor chair  
high backrest



212/5  
Cantilever chair  
standard height backrest



220/82  
Task chair, medium-height  
backrest  
Management grade upholstery



220/92  
Task chair, high backrest  
management grade upholstery

A four-wheeled trolley for six cantilever chairs is available.

**21 range**, design: Klaus Franck, Werner Sauer. The range provides seating for offices and meetings to cantilever chairs to exclusive executive and conference chairs. The wide choice of models makes furnishing all areas of a company with the famous office chair classic child's play. The robust, compact, and easy-to-use models are ideal for today's co-working spaces. The characteristically shaped shell with its replaceable cushioning makes the cantilever chair virtually the last word in comfort. A choice of frame surfaces, shells, and covers in different colors respond to virtually any design requirements.

# Modus.



263/7 Modus Basic  
Task chair  
standard height backrest



273/7 Modus Compact  
task chair  
standard height backrest



274/7 Modus Compact  
task chair  
high backrest



275/7 Modus Compact  
task chair  
medium height backrest



277/7 Modus Compact  
cantilever chair  
standard height backrest



284/7 Modus Medium  
task chair  
high backrest



283/81 Modus Executive  
task chair  
standard height backrest



284/81 Modus Executive  
task chair  
high backrest



283/7 Modus Medium  
Task chair  
standard height backrest

Not pictured: 279/7 Cantilever chair with medium-height backrest; four-wheeled trolley for 6 cantilever chairs

**Range 26/27/28**, design: Klaus Franck, Werner Sauer and wiege, Fritz Frenkler, Justus Kolberg Designed for ease of repair and disassembly to its component parts, this slender office chair is an ecological trailblazer too. The elasticity of the back, the taut cover with the cut-out sections at waist level and the stylish swivel arms that are part of the synchronous adjustment technology offer dynamic seating to perfection. Choose from the Basic and Compact to spacious Medium to the exclusively padded Executive models.

# Neos.



181/6  
Task chair, medium height  
backrest  
transparent backrest



181/71  
Task chair, medium height  
backrest  
back cushioning



183/3  
Cantilever chair with seat  
and backrest upholstery  
stackable



183/3  
Cantilever chair  
with seat cushioning  
stackable

Four-wheeled trolley for 8 cantilever chairs

**180 range, design: wiege.** The attractively understated design blends in with virtually any backdrop. Depending on requirements, it also has a height-adjustable backrest shell or covered backrest frame. Neos comes with crisp shapes and contours and a perfectly coordinated synchronous adjustment mechanism with large opening angle, suitable for people weighing between 40 to 120 kg. Add its practical and very simple adjustment settings and you have a multipurpose office chair for healthy dynamic sitting. Even better: The stackable cantilever chair with its consistent design down to the last detail and comfort enhances any space.

# Wi-Chair.



228/20  
Multipurpose chair  
plywood



228/30  
Multipurpose chair  
fully upholstered

**From 10/25: 228 range, design: Wilkhahn.** Items of furniture that meet complex needs in the most attractive and ingenious way become captivating life-long friends. The Wi Chair delivers healthy synchronized 3D movement without any mechanics. Adjusting it to suit people of different heights and weights could hardly be simpler. It's crafted from natural, single-type or recyclable materials. And this item of furniture is so attractive and durable that next generations will love it too.



## **Conference chairs**

Holding meetings, assessing situations and taking decisions are some of managers' core responsibilities. According to case studies, top executives spend way over more than 80% of their working hours in meetings and conferences. If relaxed and open dialog during (often very long) meetings is a must, then very comfortable seating is just as important as its quality. In other words, furniture that conveys a high regard for the people sitting on it and reflects corporate values. Wilkhahn's chair ranges always have the right answers to diverse functional and design requirements.



Intra 295/7 and 295/8, design: Phoenix Design, cover: 74 leather, photo: Georges de Kinder





**Graph** 302/6, design: jehs+laub, cover: 74 leather, photo: Thomas Bach





**Decide** 296/4, design: Wilkhahn, cover: 68 Remix, photo: The Subdivision





Sola 291/7 with custom-made column, design: Justus Kolberg, cover: custom-made leather, Photo: Heinrich Hecht





**Graph** Conference chair 301/5, design: jehs+laub, cover: 74 leather





Occo Conference 224/44, design: jehs+laub, cover: 68 Remix, photo: Studio Gataric Fotografie





**Yonda Conference** 321/33, design: neunzig° design, cover: 64 Morph, **Occo** Lounge table 222/73, design: jehs+laub, photo: The Subdivision



# Decide.



---

296/1  
Conference chair  
standard height backrest  
ring-shaped armrests with  
wooden armrest pad  
3D suspension



---

296/5  
Conference chair  
medium height backrest  
Ring-shaped armrests without  
pad  
3D suspension



---

296/5  
Conference chairs  
medium-height backrest  
Armrests without pad  
3D suspension



---

296/6  
Conference chair  
high backrest  
ring-shaped armrests without  
pad  
3D suspension



---

296/6  
Conference chair  
high backrest  
ring-shaped armrests with  
leather pad  
mechanism with manual weight  
adjustment

**296 range**, design: Wilkhahn. Wilkhahn's new Decide chair range combines stylish, timeless task chair design with the company's award-winning expertise in healthy, ergonomic sitting. This factor is particularly evident in the innovative 3D suspension which, thanks to unique high-performance steel, provides healthy stimuli to back muscles without any mechanical action. The wide choice of models and features makes the chair ideal for meeting and conference spaces throughout organizations. Matching the chair perfectly to the corporate design is also no problem.

## Graph.



301/5  
Conference chair  
medium height backrest



301/5  
Conference chair  
medium height backrest



301/5  
Conference chair  
medium height backrest



301/7  
Conference chair, medium height  
backrest, height adjustable



301/8  
Conference chair, medium-high  
backrest, height-adjustable  
active rocking technology



302/5  
Conference chair  
high backrest



302/7  
Conference chair  
high backrest  
height adjustable

**300 range**, design: jehs+laub. The fully covered and upholstered seat and backrest frame deliver superior sprung comfort. The die-cast aluminum frames and armrests invite users to come and touch them and the covers reveal superlative craftsmanship. The Graph conference chair optionally comes in two backrest heights, with glides or casters plus height adjustment or active rocking technology. See also stand-alone tables and table configurations page 105.

## Graph Iconic.



304/5  
Conference chair  
high backrest



304/5  
Conference chair  
high backrest



304/7  
Conference chair, high backrest  
height adjustable



304/8  
Conference chair, high backrest  
height-adjustable  
Active rocking technology

**300 range**, design: jehs+laub. For the 10th anniversary of the chair range, designers jehs+laub played with contrasts in the upholstery too. The luxurious upholstery, the two elastic Powerjoint supports at the front and supportive leaf spring make sitting on the chair a comfortable experience in every respect. In the Iconic Edition, extra upholstery foam laminated on both sides is partially inserted into the seat and backrest cover and is sewn to the cover with diamond-shaped stitching. See also stand-alone tables and table configurations page 105.

# Intra.



295/6  
Conference chair  
standard height backrest



295/7  
Conference chair  
medium height backrest



295/8  
Conference chair  
high backrest

**295 range**, design: Phoenix Design. The concealed synchronous adjustment mechanism and controls fitted to the aluminum armrests lend the chair an uncluttered aesthetic. In terms of materials and craftsmanship, it also suggests quality and an appreciation for the person sitting on it. Organic lines, precise transition points, modern color combinations and dynamic comfort make Intra the embodiment of a new type of management culture. Thanks to three backrest heights, this culture can be expressed in a whole host of areas ranging from desk-based workspaces or meetings to customer-service situations.

# Occo Conference.



224/24  
Upholstered chair  
medium height backrest  
Solid wood four-leg frame  
(oak or walnut frame)



224/104  
Upholstered chair  
medium-high backrest



224/34  
Upholstered chair  
medium height backrest



224/43  
Upholstered chair  
standard height backrest



224/54  
Upholstered chair  
medium height backrest



224/64  
Upholstered chair  
medium-high backrest

**224 range**, design: jehs+laub. The chairs stand apart for their generously sized, fully upholstered seat shells, which come in two backrest heights and have extra comfortable padding. Active rocking technology turns the swivel-mounted model with four-star base on glides into a dynamic conference chair that rocks. And additional height adjustment turns the five-star base model on casters into a fully-fledged office chair. See also multipurpose chairs on page 58, lounge furniture on page 74 and stand-alone tables and table configurations on page 103.

# Yonda Conference.



321/13  
Upholstered chair  
four-leg frame



321/23  
Upholstered chair  
four-leg frame  
(solid oak or solid walnut)



321/33  
Upholstered chair  
four-star base with glides  
with 3D suspension



321/33  
Upholstered chair  
four-star base on casters  
with 3D suspension



321/03  
Upholstered chair  
five-star base frame on casters  
with 3D suspension,  
height adjustable

**321 range**, design: neunzig° design. Yonda Conference is superbly comfortable due to its innovative, breathable upholstery materials and optional 3D suspension for its swivel-mounted models. What's more, the fully upholstered shell-structure chair requires virtually no adhesives. As a result, all components can be sorted to type at the end of the product's life. See also multipurpose chairs page 59 and lounge furniture, page 75.

# Sola.



291/7  
Conference chairs



291/71  
Conference chair  
management grade upholstery



291/71  
Conference chair  
management grade upholstery

**290 range**, design: Justus Kolberg. The Sola conference chair is a typical Wilkhahn design. It combines innovative comfort with crisp design and a top-quality appeal. The chair's aesthetic is defined by the linear, slender geometry of the seat shell. It also stands apart for distinctive lines of the aluminum base frame that branches out from the center column into a V-shaped support, the ends of which culminate in the armrests. Production and sales of Sola are licensed by Davis Furniture, NC, US.



## **Multipurpose chairs**

Offices are places where people communicate and collaborate. They interact during meetings, seminars, training sessions, or over lunch in the cafeteria. The variety of all forms of communication and the rooms designed to match is just as diverse as the seating requirements. Sometimes seating needs to be swivel-mounted or comfortably upholstered, or in other cases, ease of use and stacking capabilities are paramount. Whatever the demand, the many Wilkhahn ranges offer the right chair for any purpose – and oftentimes even within one single range. Seamless solutions are the upshot.



**Aline** 230/1, design: Andreas Störko, cover: Coated polyester fabric, photo: Louise Stickland – courtesy of Kinesys





Aula 238/10, design: Wolfgang C.R. Mezger, with the **mAx** folding table range, photo: Thomas Bach





Occo SC 221/101 and 221/102, with the **Graph** table range, design: jehs+laub, cover: 38 Era, photo: The Subdivision





Yonda 320/20, 320/30, 320/10 and 320/01, design: neunzig° design, cover (320/01): 54 Pitch, photo: Thomas Bach



# Aline.



230/1  
Sled-base chair



230/2  
Sled-base chair  
with armrests

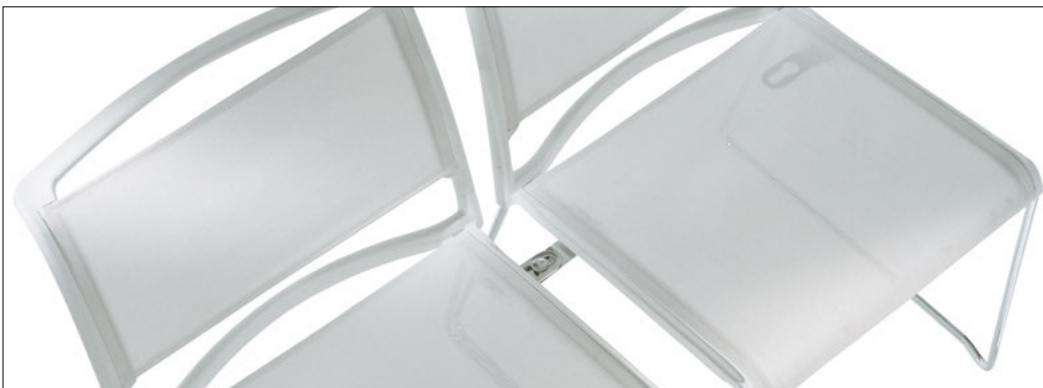


232/1  
Task chair



232/2  
Task chair  
with armrests

Four-wheeled trolley for 20 sled-base chairs without seat cushioning or 15 sled-base chairs with seat cushioning



**230 range**, design: Andreas Störiko The stackable sled-base chair is the centerpiece of the stylish range. In conjunction with the chrome frame, the seat and backrest frames made from through-dyed, unbreakable plastic form a light and elastic, yet stable structure. And the cover made of transparent high-performance fabric just enhances the exceptional comfort. The special shape of the sled-base seat frame allows very precise, reliable and easy stacking. A contact suppression feature in the swivel-mounted height-adjustable visitor and office chairs delivers extra comfort. See also stand-alone tables and table configurations on page 102.

# Aula.



238/10  
Multipurpose chair  
plastic frame



238/10  
Multipurpose chair  
plastic frame



238/11  
Multipurpose chair with seat  
cushioning  
plastic frame



238/12  
Multipurpose chair with padding  
on the inside, plastic frame



238/13  
Multipurpose chair fully uphol-  
stered  
plastic frame



238/30  
Multipurpose chair  
tubular steel frame



238/31  
Multipurpose chair with seat  
cushioning, tubular steel frame



238/32  
Multipurpose chair with padding  
on the inside, tubular steel frame

Four-wheeled trolley for 10 multipurpose chairs available



**238 range**, design: Wolfgang C.R. Mezger The seat shell's shape, elasticity and ergonomic design provide superior support and comfort for people of all shapes and sizes. Viewed from the rear and the sides, the shell's organic, three-dimensional shape is very attractive. Four frame and shell colors, four upholstery types and three frame variants with and without armrests tap into a wide range of design options for conference and multipurpose spaces, cafeterias, seminar and conference centers and co-working spaces.

# Ceno.



---

361/5  
Conference chair,  
medium height backrest  
up to 8 are stackable



---

361/6  
Conference chair  
medium height backrest  
, up to 8 are stackable



---

362/5  
Conference chair  
high backrest  
up to 8 are stackable



---

361/6  
Conference chair,  
high backrest  
up to 8 are stackable

Four-wheeled trolley for 8 conference chairs available.

**361 range**, design: Läufer+Keichel. Ergonomic comfort and sophisticated stacking capabilities turn meetings and conferences into professional, easy-to-configure events. The upholstered and covered backrest shell adapts elastically. The breathable cushioning fitted to the seat frame is exceptionally comfortable and the harmonious shape of the bottom means the chair can be stacked without any pressure marks forming in the seat. Its crisp and organic design makes Ceno the ideal seating at dining tables, in restaurants, cafeterias, or multipurpose conference spaces.

# Metrik.



186/3  
Cantilever chair  
tubular steel frame  
coated



186/3  
Cantilever chair  
tubular steel  
frame, bright chrome-plated



186/3  
Cantilever chair,  
tubular steel  
frame, black chrome-plated



186/3  
Cantilever chair  
, up to 5 are stackable



186/3  
Cantilever chair  
with soft padding  
tubular steel frame,  
bright chrome-plated

Four-wheeled trolley for 8 cantilever chairs available.



187  
Inline connectors



186  
Four-wheeled trolley with a stack  
of chairs

**186 range**, design: whitelD. This spacious seat with integrated seat cushioning offers fantastic comfort, which can be enhanced with back cushioning. Otherwise Metrik has a streamlined, angular aesthetic. Thanks to new technologies, a complex seat body of this type can be made in one piece. Because the seat and frame are in the same color, the whole chair looks seamless. Four frame and shell colors, shiny or black chrome-plated frame surfaces and a variety of seat covers open up a wide range of design options. The seat cushioning can also come with soft padding.

# Occo.



221/10  
Multipurpose chair  
not upholstered  
up to 10 are stackable



221/22  
Multipurpose chair  
padding on the inside  
(oak or walnut frame)



221/30  
Visitor chair  
felt pad



221/100  
Sled-base chair  
without upholstery  
up to 6 are stackable



221/41  
Multipurpose chair  
Seat cushioning



221/00  
Multipurpose chair  
without upholstery



221/51  
Counter chair  
seat cushioning



222/52  
Counter chair  
with padding on the inside



222/11  
Multipurpose chair  
seat cushioning  
, up to 6 are stackable



222/21  
Multipurpose chair  
seat cushioning  
(oak or walnut frame)



222/32  
Visitor chair  
padding on the inside



222/102  
Sled-base chair  
with padding on the inside



222/40  
Task chair  
without upholstery



222/01  
Task chair  
height-adjustable  
Seat cushioning



223/20  
Bar stool  
without upholstery  
(oak or walnut frame)



223/11  
Bar stool  
without upholstery  
up to 10 are stackable

**222 range**, design: jehs+laub. Seat shells with and without armrests, six frames, four types of upholstery and six shell colors produce a grand total of 288 models. These respond to virtually all functional and design requirements – from cafeterias to break-out areas and co-working spaces, or even conference rooms demanding a little more gravitas. Four-wheeled trolley available for ten multipurpose chairs without seat cushioning, eight multipurpose chairs with seat cushioning and ten sled-base chairs. Color-matched bar chairs in three frame and types of upholstery complement the range. See also conference chair on page 42, lounge furniture on page 74 and stand-alone tables and table configurations on page 103.

## Yonda.



320/10  
Multipurpose chair  
felt pad



320/12  
Multipurpose chair  
padding on the inside (leather)



320/20  
Multipurpose chair  
(oak or walnut frame)



320/31  
Task chair  
seat cushioning with contoured  
upholstery  
3D suspension



320/00  
Task chair  
height-adjustable  
3D suspension



320/32  
Visitor chair  
padding on the inside

**320 range**, design: neunzig° design. Yonda combines quality with comfort and sustainability. It all starts with the stylish ergonomically supportive shape of the seat shell, continues with the innovative 3D suspension and is by no means finished with the velvet-like look of the seat shell made solely of recycled material. Married with diverse frame shapes, seat shells in six colors and with five upholstery options produce a variety of chair models. These chairs are ideal as dining tables for homes, at conference and meeting tables in workplaces, in libraries, hotels and cafeterias, home offices or co-working spaces. See also conference chairs page 43 and Lounge furniture on page 75.

## Pep.

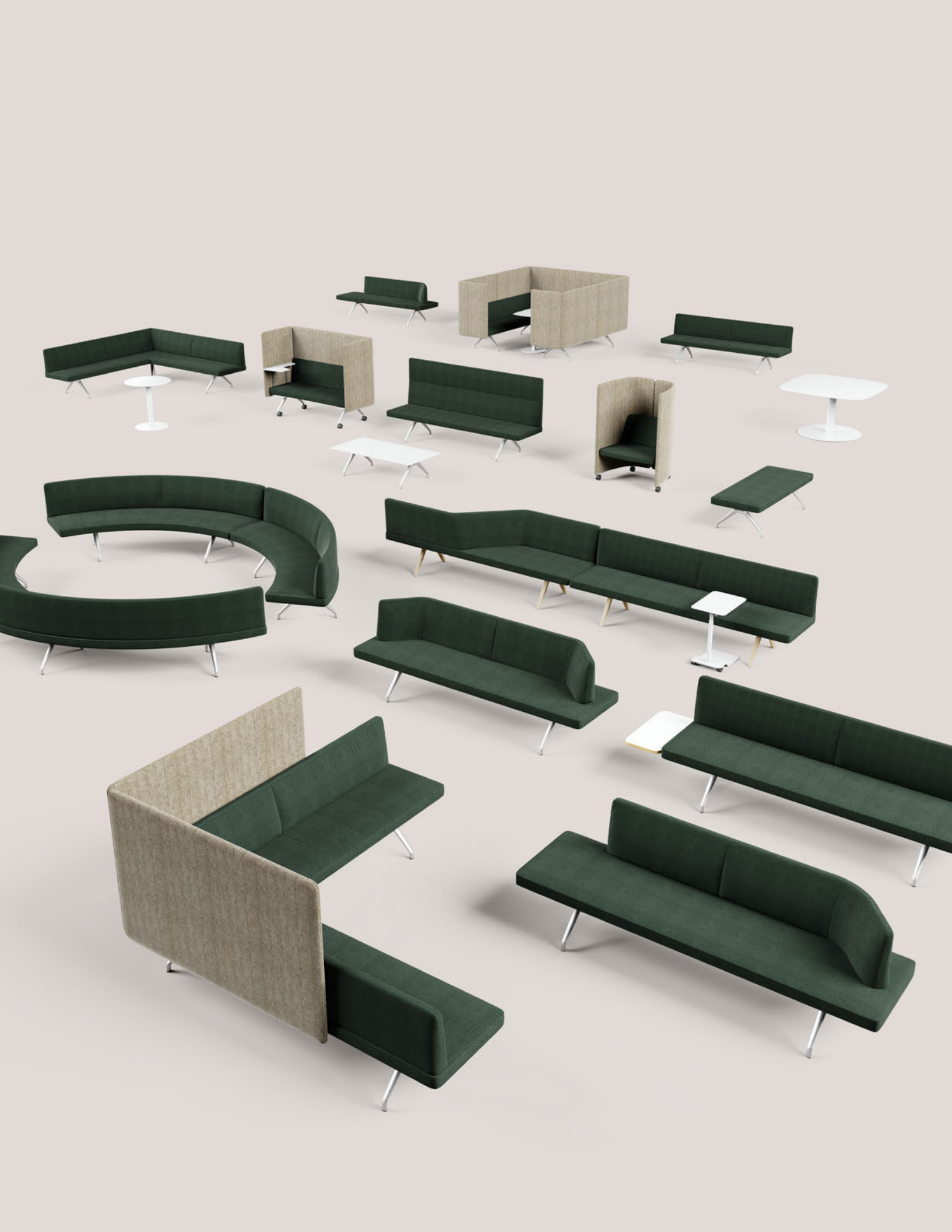


227/33  
Visitor chair  
swivel-mounted, glides



227/33  
Visitor chair, swivel-mounted  
armrests and casters

**227 range**, design: Wilkhahn. Pep is a swivel-mounted, upholstered chair. It combines a refreshingly simple design with comfort and the residential sensibility of a fully upholstered seat shell. The stylish, die-cast aluminum, four-star base lends the chair a lightweight appearance. The optional black polyamide armrests also provide plenty of room and support for people on the heavier side.



## **Soft seating**

Functionality, quality and a resimercial appeal are what define attractive working environments. Which is why soft seating isn't just used in lounges. It also features in the middle of rooms and even kitchenettes and cafeterias, which need to convey hospitality above all. This is where the Wilkhahn ranges meet top standards. Superbly designed and with ergonomic, firm upholstery, they ensure healthy comfort and tap into all sorts of versatile usages and design options.



Insit 782/5, design: Wolfgang C.R. Mezger, cover: 68 Remix, with a **Confair Next lectern** 441/4, design: Wilkhahn, photo: The Subdivision





**Solid wood base frames** in oak with a natural oiled finish, white oiled, stained black or gray as well as in walnut, natural oiled.





**Occo Lounge** upholstered chair 225/54 and lounge table 222/75, design: jehs+laub, cover: 92 Credo, photo: Thomas Bach





**Yonda Lounge** Lounge chair 322/34, stool 322/2, ottoman 322/1 and a pebble-shaped side table 322/5, design: neunzig°design, cover: 64 Morph





**Asienta** Lounge table 860/1, upholstered chair 861/5 and 3-seater 863/5, design: jehs+laub, cover: 74 leather, photo: Thomas Bach



# Asienta.



---

861/5 and 861/6  
Upholstered chairs  
widths 70 cm and 78 cm



---

862/5  
Upholstered  
bench with backrest, width 150 cm



---

863/5  
Upholstered bench with backrest  
Width 218 cm



---

865/3  
Bench without backrest  
width 215 cm



---

860/1 and 860/2  
Table  
width 65 cm x depth 65 cm x height 40 cm and  
width 120 cm x depth 60 cm x height 40 cm

**860 range**, design: jehs+laub. The slender aluminum base frame looks stylishly lightweight. The stand-alone chairs appear soft yet come with firm upholstery. The two-seater and three-seater sofas, and upholstered benches with backrests, stand apart for their excellent comfort. The secret lies in an exclusive upholstery method of multiplex frames with wave springs, padded cut foam and precisely hand-sewn covers made of exquisite textiles and leathers. The tops of the matching side tables, which are inserted into the aluminum frame, are made of veneered composite wood or glass that is varnished on the bottom. A top-class lounge furniture range.

# Insit. Insit Screen.



782/5 and 7  
Widths 165 cm and 240 cm  
Backrest height optionally standard or 30 cm higher



782/51 or 783/51 and 782/52 or 783/52  
Widths 203 cm or 240 cm, with open end at the left or right and an optional angled backrest on the left or right



783/56  
Width 240 cm  
Double-view backrest



782/90  
Corner element, backrest at 90°, each 229 cm wide, optionally 30 cm higher

Not pictured: 783/55 width 240 cm with an angled backrest on both sides,  
783/60 width 236 cm, 60° sloping backrest



781/10  
Insit U-shaped screen



781/5  
Insit Single Seat  
mobile chair with privacy panel at the sides and back

Not pictured: 780/1 table  $\varnothing$  70 cm, 780/2 table 70 x 70 cm, 780/3 table 140 x 140 cm, 780/4 table 70 x 140 cm or 70 x 175 cm,  
780/9 Lounge table 70 x 140 cm, 780/10 connecting table, 780/11 side table, 780/12 corner table, 780/13 shelf, 780/14 corner writing ledge

**780 and 781 range (Screen)**, design: Wolfgang C. R. Mezger. Insit Screen can take the form of a free-standing sculptural item of furniture, or sectional seating. Its characteristic design with stylishly molded frame, flat upholstery and backrest are inviting symbols of collaboration. It's the embodiment of well-being. It appears to be floating on air with firm upholstery to guarantee ergonomic comfort. At a seating height of 45 cm, it enables people to hold discussions, work, or eat and drink at standard table heights. The optional screens were developed as a modular set of stand-alone rear panels, L-shaped corner solutions with side panels, U-shaped screens for stand-alone benches and C-shaped enclosures for two Insit benches facing each other. Available on casters or with solid wood legs, Insit offers an enormously wide range of uses.

# Occo Lounge.



225/23  
Lounge chair  
standard height backrest



225/24  
Lounge chair  
medium height backrest



225/53  
Lounge chair  
standard height backrest



225/54  
Lounge chair  
medium height backrest  
looser-fit upholstery



225/103  
Lounge chair  
standard height backrest



225/104  
Lounge chair  
medium-height backrest



222/72 Lounge table  
four-star aluminum base, Ø 90 cm, height 45 cm  
(also available as a rounded square table in a 90 cm width and  
90 cm depth)



222/73 Lounge table  
three-star steel base Ø 50 cm, height 50 cm

Not pictured: 222/62 square lounge table, 75 x 75 cm, height 45 cm

**225 range**, design: jehs+laub The Occo lounge models come with a low seating height, two backrest heights and types of upholstery. They have a solid wood base frame, stylish sled base, or are swivel-mounted with a classy aluminum star base. As stand-alone chairs or in a group, they look impressive in lobbies, or in front of fireplaces, or at home in the lounge. As a result, Occo is an enormously versatile “chair kit” that checks virtually all the boxes. And with the characteristic cut-out section in the seat and backrest shell, it conveys one design concept throughout. See also conference chairs page 42, multipurpose chairs page 58 and stand-alone tables and table configurations page 103.

# Yonda Lounge.



322/14  
Lounge chair



322/24  
Lounge chair



322/34  
Lounge chair with optional  
swivel-mounted writing tablet



322/44  
Lounge chair with optional  
swivel-mounted writing tablet



322/1  
Ottoman



322/2  
Upholstered stool



322/5  
Lounge table  
sled base, width 61 cm  
depth 48 cm, height 52 cm



322/6  
Lounge table,  
sled base width 82 cm  
depth 64 cm, height 42 cm

**322 range**, design: neunzig° design. Alongside the multipurpose Yonda shell-structure chair range, which is geared to the circular economy, the Yonda Lounge range is the perfect option for lobbies and receptions, areas in the middle of rooms, interactive spaces, and lounges. The outstandingly comfortable chair has a sled base and oak legs. The swivel-mounted version has a four-star aluminum base and optional ring-type casters and a writing tablet. An ottoman with a sled base, a swivel-mounted, fully upholstered stool and pebble-shaped side tables in two table heights and with sled bases round out the range. See also conference chairs page 43 and multipurpose chairs on page 59.



## **Sit-stand stools**

People who make more frequent use of movement options and postures have healthier joints and muscles. And what's more, anyone who wants to broaden their horizons, needs a change of perspective and therefore direction. Sitting, standing, walking... Wilkhahn has spent over three decades developing sit-stand stools that encourage a range of movement and postures, therefore keeping body and mind agile.



**Stitz 2** 201/2, design: ProduktEntwicklung Roericht (PER), cover: 74 leather, photo: Klaus Frahm



## Sitzbock.



204/01  
Black



204/02  
White



204/03  
Gray



204/04  
Red



204/02  
with seat pad 204/12



204/02  
with upholstered seat pad 204/21

**204 range**, design: Rudolph Schelling Webermann. It's made of through-dyed polypropylene in four colors, weighs just 4.8 kilos and is easy to put in groups, stack crosswise or even take outside. Anyone preferring a little more comfort can add a non-slip felt "saddle blanket" in four colors or add a seat pad to their Sitzbock.

## Landing.



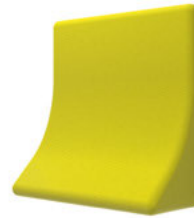
208/1



208/2



208/2



**208 range**, design: Rudolph Schelling Webermann. Fostering interaction is one of office planners' biggest challenges. The innovative, sound-absorbent, Landing wall tile modules manage to create a welcoming atmosphere for spontaneous "stopovers", even where space is lacking. The square shape means that the three-dimensional module can be used as a shelf, a place to lean on or perch at. An ingenious option.

## Stand-up.



202/0101  
Black



202/0102  
Red



202/0103  
Light blue



202/0104  
Green



202/0105  
Orange



202/0107  
Anthracite



202/0108  
Gray



202/0110  
Bronze



202/0111  
Beige



202/0112  
Sage



202/0113  
Cobalt blue

**202 range**, design: Thorsten Franck. Given a gentle push, it swings back, but rights itself again – even from an up to 50° angle from the vertical! The tapered shape of this attractive eye-catcher with its upholstered seat is covered in three-dimensional fabric. And the black plastic base means it won't slip. Whether standing alone at an angle or loosely grouped together, Stand-ups come in 11 colors, encourage healthy exercise breaks and put a smile on people's faces.

## Stitz 2.



201/1 Sit-to-stand stool  
natural cork seat



201/2 Sit-to-stand stool  
cork seat, covered with fabric or  
leather

**20 range**, design: ProduktEntwicklung Roericht. Flexible to adjust whatever the height of the user or perching angle. This timeless item of classic furniture's non-slip elastomer base filled with quartz sand ensures it can't slip – even at a tilt. The replaceable seat surface made of waxed cork is optionally available with a leather or fabric cover.

## Rider.



205/01 Sit-to-stand stool  
black



205/02 Sit-to-stand stool  
white

**205 range**, design: Sven von Boetticher. Rider, inspired by saddles as typical examples of dynamic sitting, is impressive for its sophisticated details and precision-adjustable height. The lightweight and practical sit-stand stool in black or white, is a versatile option for workshops, brief meetings, exercise breaks or even at home.



## **Mobile and flexible tables**

For three decades, we've been encouraging people to take active roles in the workplace. This approach has the biggest potential to meet the challenges of the future. Active participation starts with people setting up and configuring settings for workshops, meetings, training sessions or project work themselves and as a team. What's more, this saves set-up times, capacities, and space. The mobile, flexible table ranges are wonderful examples of how well-being, health, productive collaboration, a coherent design language, smart efficiency, and motivation all pull together.



Timetable Shift 614/00, design: Andreas Störiko, photo: Thomas Bach



Timetable Lift 615/00, design: Andreas Störiko, with **Stitz 2**, photo: Frank Schinski/OSTKREUZ



mAx folding table 460/00, design: Andreas Störiko, photo: Klaus Frahm





**Versa** standardized system panels 636/00, 636/11 and 636/12, A-shaped foot section 636 and modesty panels 639 ...



## Confair folding table.



---

440/00 Folding table

Height 73 cm, for linear rows or rows at the front in dimensions of 180 cm to 300 cm widths and from 90 cm to 120 cm depths  
Also available as a stand-alone table in a communicative barrel shape in various dimensions



**Confair folding table, 440 range**, design: Andreas Störiko. Confair is all about prompting people to engage actively with processes of innovation and change. The folding table is the star of the range and still unrivaled in terms of functionality, quality, and aesthetics. No tools are required and a spring-loaded mechanism makes it child's play to fold up, roll into another room and reassemble. And it fits into any elevator so is idea for any story. The table's excellent design, power solutions and variety of formats and surfaces guarantee agility in both project spaces and executive boardrooms.

# Timetable.



610/00 Timetable – height 73 cm, widths 140 cm to 180 cm and depths 60 cm to 80 cm



612/00 Timetable Smart – height 73 cm, formats 120 x 60 cm, 140 x 70 cm, 150 x 75 cm and 160 x 80 cm



614/00 Timetable Shift – height 73 cm, widths 150 cm to 210 cm, depths 80 cm to 105 cm

**610 / 612 / 614 ranges**, design: Andreas Störiko. Timetables flip up in one easy step and the foot sections turn inward in the process. As a result, they're easy to move from room to room and nest very compactly into one another. The Timetable Smart series is designed to last and last. In terms of formats, the Timetable Shift closes the gap with its "big brother", the Confair folding table.

# Timetable Lift.



615/00 Timetable Lift

Height 73 – 139 cm adjustable, formats 150 x 75 cm, 160 x 80 cm 180 x 90 cm and 200 cm x 100 cm.

Also available with a trapezoid-shaped table top for video conferences in 180 x 75/90 cm or 200 x 75 /100 cm

Not pictured: 615/03 monitor mount and 615/04 roll holder as accessories



**615 range**, design: Andreas Störiko Electrical adjustment of Timetable Lift's height up to 139 cm make it ideal for hot desking or a scalable seminar, project, meeting, and presentation tables where sit-stand options in innovation spaces are encouraged. The tables come in first-class design, are compact to stow away and wheel in if required. They can be set up in one easy step and set to the height required at the touch of a button. When battery operated, they can be placed anywhere, regardless of the power supply's location. What's more, if it comes with a magnetic writing surface, one push allows the table to even double as a mobile whiteboard and projection screen. And with a monitor attached, it even becomes a height-adjustable, precision adjustable mobile tool with tilt function for video conferences.

**mAx.**



---

460/00

Folding tables from 160 cm to 220 cm widths and 60 cm to 90 cm depths (mAx light from a 45 cm depth), height 73 cm



---

462/00

The modesty panels are made of opaque fabric with an integrated stabilizing profile



Can be linked with rectangular connecting leaves or 90° corner elements



Patented folding mechanism



Three table foot sizes

**460 and 465 range**, design: Andreas Störiko. In terms of variety, sophisticated handling and aesthetic, mAx sets new milestones. The craftsmanship of the high-quality, die-cast aluminum legs with patented folding mechanism guarantees stability and durability. They also look very classy. Three table foot sizes enable a range of different shapes and table depths for all sorts of usages, from loosely arranged groups to rows of tables linked via connecting leaves and open or closed conference table systems. Straight edging, in wood or plastic depending on the tabletop, chamfered wood edging and bullnose wood edging with integrated impact-resilient profiles offer the right aesthetic and functional solutions wherever the tables are destined for.

# Contas.



Folding table model 540/25  
90 x 150 cm



546/75 (for table depth of 75 cm)  
and 546/90  
(for table depth of 90 cm)  
Four-wheeled trolley for  
5 folding tables

Not pictured: 540/15, 75 x 150 cm, 540/18 75 x 180 cm, 540/28 90 x 180 cm



549/20  
Table-table connectors



Table leg folding mechanism with integrated separator

**540 range**, design: wiege, Fritz Frenkler, Anette Ponholzer. The versatile table range Contas offers a classic shape, ease of use, and high-quality materials and surfaces. As a result, it's ideal for modern conference areas or seminar and training spaces. Because the simple, clear form, featuring frame profiles integrated flush with the table top and rounded table-leg connectors is a clever solution. Ingeniously, the table legs fold in to allow the tables to nestle into one another and a separator is integrated in the pivoting mechanism.

# Versa.



638/51  
Rectangular and barrel-shaped stand-alone tables from 180 cm to 260 cm widths and 90 cm to 120 cm depths, height 73 cm



637/00  
Rectangular standardized system panels, starting and end table top panels in 80 cm to 240 cm widths and 80 cm to 150 cm depths, 90° circular segments, panels in a semi-trapezoidal and trapezoidal shape in 80 cm to 100 cm depths or semi-barrel shape in 180 cm to 240 cm widths and 120 cm to 150 cm depths, height 73 cm



To connect two standardized system panels easily, just release, move and engage the bayonet lock again

**636 range.** design: Wolfgang C.R. Mezger The molded form of the elegantly stylish aluminum base frame, which appears to have been made from a single piece of material, underscores the classy look of the configurations. The bayonet lock on the frame and table top connection allows tables to be set up, extended, made smaller and dismantled again in no time. Lots of different shapes and formats offer the right solutions for any size of room, number of attendees and type of conference.



**Graph**

Stand-alone table 300/00 and  
conference chair 301/5,  
Design: jehs+laub

## **Stand-alone and conference tables**

A table has a major impact on the subconscious where discussions and decision-making processes are concerned. In addition to the table frames, which offer leg room and shouldn't create barriers, the table shapes and formats are crucial aspects too. These can create a feeling of distance or closeness, lead to factions forming or enable interaction so that everyone is on a par with each other. Therefore, the right option depends on people numbers, the room's shape and management culture. Sometimes the focus is on discussion, sometimes on quick and hierarchical decisions. Which is why Wilkhahn offers compact, large, round, and square table solutions, all in first-class design.



Occo table 222/81 and multipurpose chair 222/22, photo: Thomas Bach



White oak, nougat oak, natural walnut, natural heartwood ash ...



Natural knotty oak, smoked oak, umbra walnut, sepia walnut and many other colors

# Aline.



---

235/2 Table, square  
width 70 cm, depth 70 cm, height 73 cm



---

236/3 High table, round  
optionally nest into one another, Ø 70 cm, height 105 cm

**230 range**, design: Andreas Störiko The delicate charm of the Aline table family is perfect for furnishing those in-between spaces that require a certain informality but gravitas at the same time. The flat aluminum star bases, slim table columns and table tops must 12 mm thick and made of through-dyed HPL (High Pressure Laminate) with finely chamfered table edges are stylish and easy to look after. See also multipurpose chairs page 54.

# Occo.



---

222/81 Office table  
various formats from a 160 cm width and 80 cm depth  
to a 190 cm width and 90 cm depth, height 73 cm



---

222/81 High table  
various formats from a 160 cm width and 80 cm depth  
to a 190 cm width and 90 cm depth, height 105 cm



---

222/61 High table  
90 cm width and 90 cm depth, also with a round table top  
Ø 100 cm and available at seating height, height 105 cm

**222 range**, design: jehs+laub. In terms of form and function, the table range matches the Occo chair models perfectly and is a good choice for cafeterias to customer service and meeting spaces all the way to club rooms. The range of table top finishes is also broad, from bonded (prelaminated) surfaces to laminates to veneers all the way to solid oak. And the solid wood table frames always have a highly natural and resimercial appeal. Solid wood base frames in oak with a natural oiled finish, white oiled, stained black or gray as well as in walnut with a natural walnut match the chair frames. See also Occo conference chairs page 42, Occo multipurpose chairs page 58 and Occo Lounge page 74 and Yonda multipurpose chairs, page 59, conference chairs page 43, lounge chairs page 75.

# Logon.



---

## 620/00 Rectangular tables

Beginning, intermediate and finishing elements in a variety of formats from a 150 cm width and 75 cm depth to a 300 cm width and 130 cm depth. Also available in a barrel-shaped design in 240 cm or 260 cm widths and 100/120 cm depths or 300 cm widths and 100/130 cm depths. Up to a width of 200 cm, also with casters that can be locked in place

**620 range**, design: Andreas Störiko The rounded laminated wood edging with its integrated impact-resilient profile, slender uprights, and stylishly modeled foot sections lend stand-alone tables and table configurations light-as-a-feather simplicity. The look is achieved thanks to a smart tensile structure in the frame that originated in aircraft construction. Whether as a stand-alone table or linked table configuration, on height-adjustable glides, or for mobile use on casters – Logon is the go-to response to any requirements. For conference spaces that can be partitioned, an ideal pairing with the Confair folding table, page 90 or the Timetable Shift, page 92

# Graph.



## 300/00 Stand-alone tables and table configurations

height 73 cm, with unitary table tops: Oval widths 200 cm to 280 cm, depths 120 cm to 130 cm, round diameter 125 cm to 150 cm, square 120 x 120 cm, with multi-part table tops: Round diameter 210 cm, square 190 x 190 cm, oval with starting, intermediate and finishing elements in various widths and depths 150 cm and 230 cm



**300 range**, design: jehs+laub. Just like the Graph chairs, the exclusive table range is defined by the consummate fusion of edges and fluid lines, surfaces, and curved sections. The sleek lines of the sloping table legs continue seamlessly in the aluminum underframes and even make multi-component frames look like a single unit. The table tops appear to float on air because they taper toward the edges and protrude over the legs. The formats comprise round tables with just four legs for up to 12 people, rounded square tables and long or compact oval configurations in oval shapes for up to 22 people. See also conference chairs page 41.



**Wireless Charger** 701/99 for  
Qi-enabled devices – fitted here  
to the Timetable Lift 615/00,  
photo: Thomas Bach

## **Power solutions**

These provide maximum mobility and the ability to use corresponding systems with our table ranges easily. For instance, Timetable Lift comes with cordless, battery-operated height adjustment. The table's easy to upgrade with a powerful 240Wh battery to enable wireless recharging of mobile devices, or up to 60 watts via a USB cable. Combining it with Wilkhahn's power server and its 230Wh battery that meets top safety standards means not only USB charging options but also connections to wall power for larger devices such as video screens. As a result, appliances are independent of sockets.

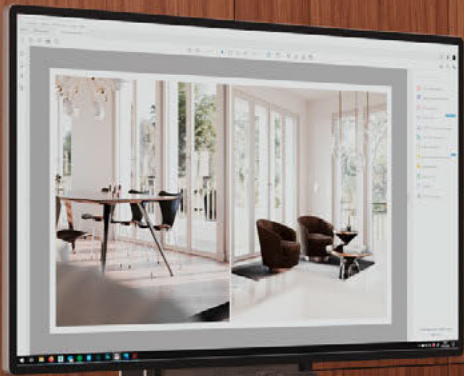


The Power Bar is fitted underneath the table top with a cable channel (optionally directly into the underframe profile for Timetable Shift). Even with a Power Bar and cable channel, the flip-top tables are compact to stow away.

The lockable, strain-relieved connecting system is based on stage equipment and rules out the risk of incorrect use, making it very safe. As a result, tables can be detached or added at any time. The table ranges remain flexible enough for configuration by users themselves.

## **Power Bar for mAx folding tables and mobile Timetable and Confair folding tables**

Even when tables are linked, the Power Bar makes powering the flexible and mobile table families simple. Instead of each table with its own power supply, several tables can be interconnected at once, depending on the sockets and devices connected. This cuts the number of power points required, tripping hazards, shortens set-up times in seminar and conference rooms and also means that spaces can also be used as pop-up offices.



## **Confair Next**

Dynamic change, the competition for talented people, on-site and remote working, digital collaboration... What do all these factors mean for office spaces? Agile working is becoming the corporate standard. First-class design is setting itself apart from the competition. Offices are primarily used for collaboration and the analog world is increasingly merging with the digital. Therefore, it's important to integrate the tools required for agile and hybrid collaboration into the corporate world – in the interest of seamless solutions. Which is why we developed Confair Next. It's integrative, customizable, flexible to use and open to all technologies tomorrow's world might bring. A top-notch, attractive table that's a sound investment. Pick Confair Next to inspire new ideas.



Power server with  
monitor mount



Media Wall



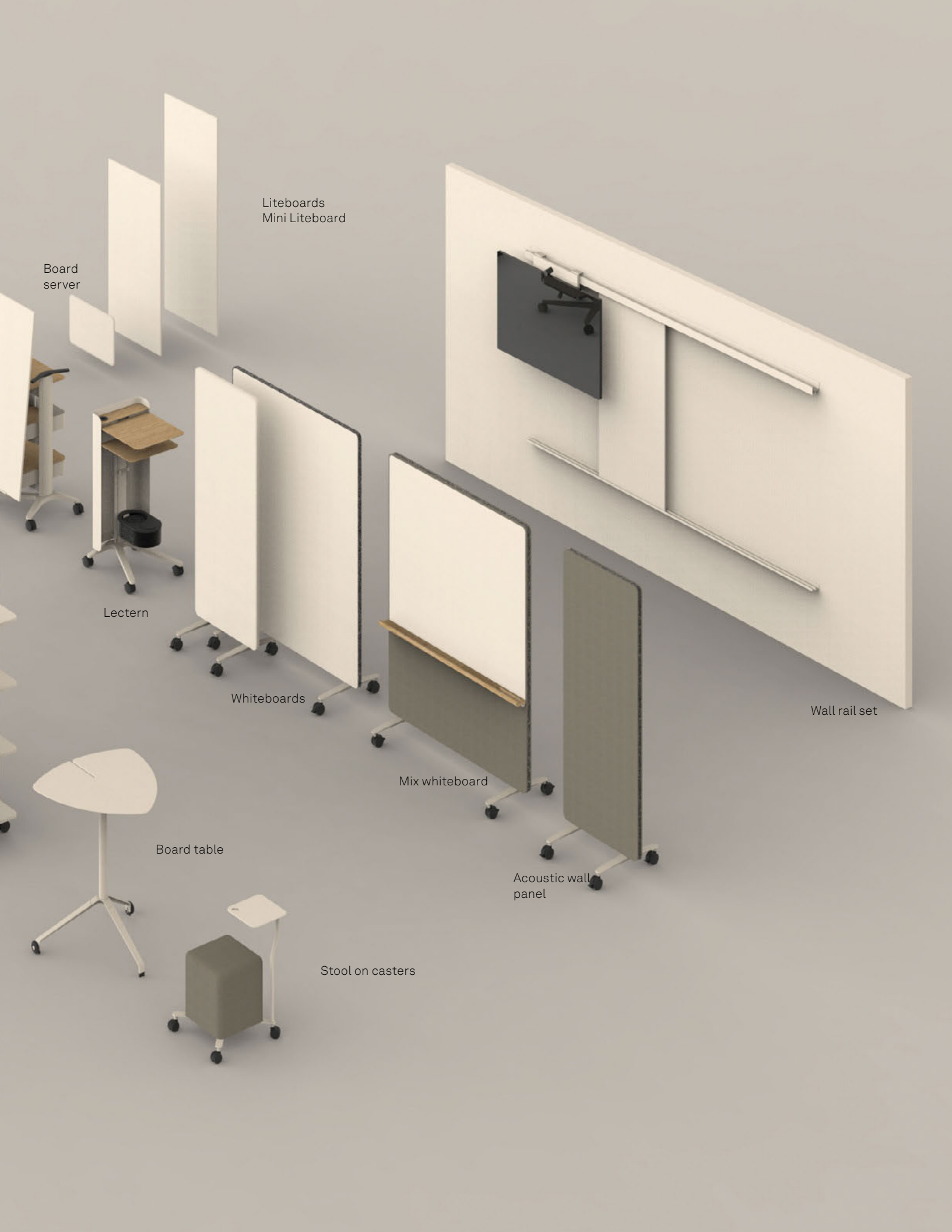
Display Rack



Four-  
wheeled  
trolley



Shelving unit  
on casters



Liteboards  
Mini Liteboard

Board  
server

Lectern

Whiteboards

Mix whiteboard

Wall rail set

Board table

Acoustic wall  
panel

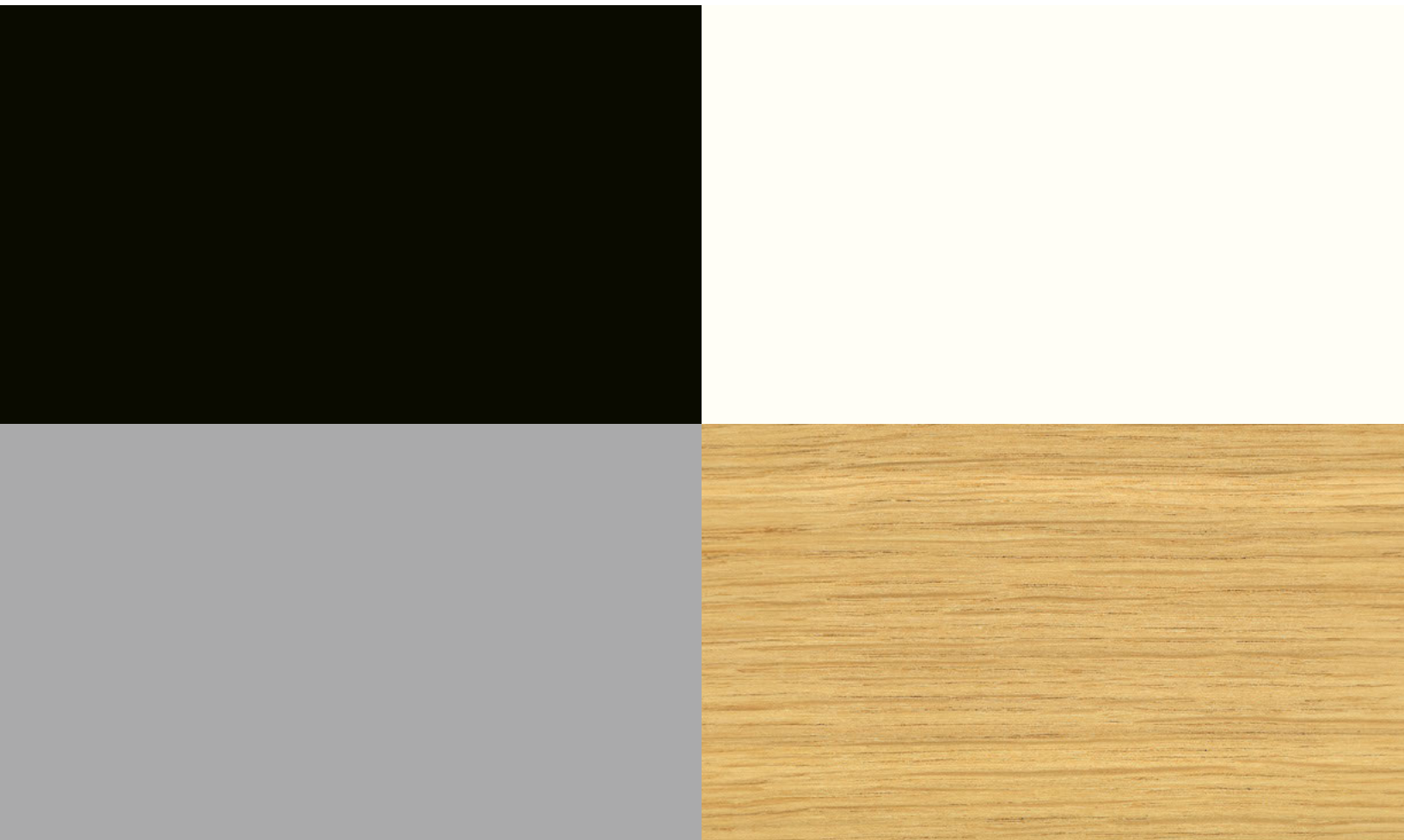
Stool on casters



Detailed photo of the electrically height-adjustable **Display Rack 442/10**, design: Wilkhahn, cover: 380 Era 170, photo: Ludwig Schöpfer/StudioTusch



Finishes for whiteboard writing surfaces and acoustic walls: Very shiny white, very shiny sand, sound-absorbent fleece, 400 Renewed Loop Screen, 380 Era 170



Finishes for base frames and shelves: Black with a textured matte finish (RAL 9011), white with a textured matte finish (RAL 9016), solid oak a silver satin finish (only shelves)

# Confair Next.



442/00 Media Wall



442/10 Display Rack



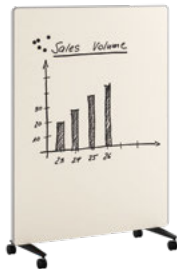
443/10 Liteboard



443/11 Mini Liteboard



443/12 Wall rail set



443/20 Whiteboard



443/21 Mix whiteboard



443/30 Acoustic wall panel



443/40 Shelving unit on casters



441/3 Board table



441/4 Lectern



444/1 Stool on casters



448/10 Lectern



446/10 Board server



446/11 Four-wheeled trolley

# Server. Example configurations.



---

## Power server for operating large devices

447/00 Power server frame  
447/09 Power base  
447/10 Duo Power base  
705/10 Mov:e Power Unit



---

## Power server for mobile presentations

447/00 Power server frame  
447/11 Writing tablet  
447/09 Power base  
705/10 Mov:e Power Unit



---

## Monitor server, optionally battery operated

447/00 Power server frame  
447/08 Monitor mount  
447/09 Power base  
705/10 Mov:e Power Unit



---

## Server for moderator material

446/00 Server frame  
447/11 Writing tablet  
447/13 Box with drawer



---

## Server for Mini Liteboards

446/00 Server frame  
447/12 Box  
446/12 Mini Liteboard writing tablet



---

## Board server for Liteboard presentations

446/10 Board server

**440 range**, design: Wilkhahn. Confair Next is a range of new accessories in high-quality designs. These integrative, flexible, and future-proof items boost teamwork at all levels. They constitute a sound investment whichever way you look at it. Combining Confair Next with other product families in the Wilkhahn portfolio produces turnkey solutions for dynamic communication and innovation spaces.



Wilkhahn

## **About Wilkhahn**

Wilkhahn stands for design made in Germany like virtually no other furniture manufacturer. It provides high-quality office and conference furniture that serve as benchmarks for the whole industry. Even 70 years ago, the company was committed to the goal of combining better quality of use, durable design and longevity.

Wilkhahn also sets standards with its socio-ecological approach. The German Environmental Award winner collaborated on construction projects with Frei Otto and Thomas Herzog and has been actively practising environmental responsibility for over 25 years. In addition to numerous international awards, the ON office chair also received the Federal Ecodesign Award.

1907



In-house manufacturing down to the tree trunk. At the beginning, processing was carried out by machines driven by a locomobile with transmission belts.

1950



The 21A stacking chair by architect, urban planner and designer Roland Rainer was produced between 1958 and 1966. Due to the A-shaped frame made of solid beech, large numbers of chairs could be stacked on top of one another.



The first fiberglass-reinforced plastic shell chairs were developed for Wilkhahn by Georg Leowald in 1955.



The management building with its floor-to-ceiling windows in the executive offices was completed by architect Herbert Hirche in 1959. It was the expression of a new corporate culture defined by transparency and team spirit. Corporate culture defined by transparency and team spirit.

1960

1970



Leowald's idea was to optionally combine two seat shells – with and without armrests – with different frames to create chairs for a wide variety of uses.



The futuristic design of the 238 range (1976 – 1985) by Delta-Design was impressive, particularly in the James Bond movie Moonraker. And it provided key inspiration for the legendary FS, the world's first task chair made by Wilkhahn.

In production from 1961 to 1998, the 400 laminated wood range with its characteristic tennis-bat joint became a hit in the form of a lightweight, flexible, and comfortable multipurpose chair, design: Wilhelm Ritz.

### History – developments ahead of their time

New developments in materials, technologies, usage concepts and social trends fascinate and empower us to discover what's missing and make the tried-and-true even better. Timelines of the development milestones over the past 70 years show how ahead of our time we frequently were.

The same goes for the architecture at Wilkhahn's headquarters. It reveals the impact of modernism. From the rectangular management building, based on plans by Bauhaus student Herbert Hirche, to the unique production pavilions by Pritzker Prize winner Frei Otto all the way to Thomas Herzog's award-winning production shed architecture.

1980

1990



The FS-Line, developed by Klaus Franck and Werner Sauer, has been making furniture history since 1980. It made healthy, dynamic sitting the new standard for office chairs worldwide – the easy-to-use, robust, and understated classic is probably the most sustainable office chair today and more contemporary than ever.



The idea of incorporating economy, ecology, aesthetics, and a people-friendly workplace spawned the four pavilions designed by Frei Otto. These aren't just architectural gems, they also offer outstanding working conditions for those demanding jobs.



The group of production facilities designed by Thomas Herzog is still visible from afar and stands for the essential qualities of long-lasting product design. The hybrid wooden structure of this ecologically pioneering building reveals authentic materiality, sophisticated construction, and a detailed aesthetic.

Since 1992, Stitz 2, design: ProduktEntwicklung Roericht, has been encouraging healthy changes of posture – long before sit-to-stand stools went mainstream.



The company's goal to foster innovative processes led to the Confair range back in 1994 and established the new generation of dynamic conference furniture worldwide. Design: Fritz Frenkler, Justus Kolberg and wiege. Folding table: Andreas Störiko.

2000

2010



The ingenious Aline multipurpose chair is impressive for its transparency, stretchy comfort, good airflow at the rear and ease of use. It's also part of a broad product family. The stackable sled-base chair is the range's centerpiece.  
Design: Andreas Störiko.

Neos' clear lines, surfaces and multiple adjustment options with no annoying buttons or levers underpin our desire to remove the complexity from seating.  
Design: wiege.



Its kinematics are the latest milestone in office chair development. In our ON® chair, patented Trimension® technology succeeded in synchronizing three-dimensional flexibility with our bodies for the first time.  
Design: wiege.

# Design

---



Despite all the work done on the computer during the design and development phase, its aesthetic was enhanced based on models produced as 3D-printed objects during a laser sintering process.

## Timeless design

When we're striving for perfect designs, it's the time-consuming details regarding the surfaces, dimensions and radii that govern whether the result is superb or mediocre. We're only happy once further improvements are impossible and the product's function emerges in its unadulterated form. Which is how tomorrow's classic designs are never fads that come and go.

# Quality

---



As a company, our competitive edge is made possible by our workforce's expertise across generations. Skills that we hone and share.

Photo on the left: Martin Mai

## First-class craftsmanship

The combination of highly precise industrial design and hand-crafted perfection guarantees first-class quality down to the last detail. Which is how our items of furniture become life-long friends. Particularly as synchro-adjustment mechanisms, covers and tabletops can be reconditioned after a long period of use.

# Aspirations

---



## **Understanding contexts**

Seating focuses on users. In other words, people's roles, well-being, and health. Tables, on the other hand, are all about social aspects and togetherness. People come to a table to bolster feelings of community, to obtain information, to hold discussions, to learn, develop new things, to play, or to party. The tables, formats and the table frames' position and design all impact the way people interact. Tables can create distance, closeness, and exchanges of views between equals.

Our aspiration is to bear all these factors in mind. We strive to keep up to date with how people engage with each other and design products that are both very attractive and still outstandingly functional.

# Sustainability

Wilkhahn

## Responsibility all along the line

2023 – 2025 Sustainability Report  
with EMAS Environmental Statement



### Owning up to sustainability and having a say in the future

Ecological responsibility was established in the company as early as 1989. Since 2001, we have had our environmental performance certified annually by independent auditors pursuant to the European Eco-Management and Audit Scheme (EMAS).

**Our antidote to the throw-away society is to provide products where form, function and materials have a purpose and are long lasting.**





Bad Mnder, Germany

Rotterdam, Netherlands

Brussels, Belgium

London, England

Bern, Switzerland

Zrich, Switzerland

Madrid, Spain

Casablanca, Morocco

Toronto, Canada

New York, USA



Poznan, Poland

Vienna, Austria

Tokyo, Japan

Shanghai, China

Hongkong, China

Dubai, UAE

Kuala Lumpur, Malaysia

Singapore, Singapore

Johannesburg, South Africa

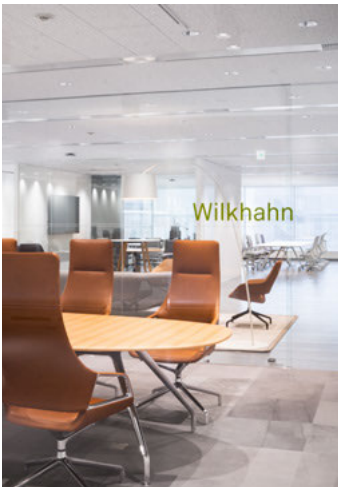
Brisbane, Australia

Sydney, Australia

Melbourne, Australia

- Legend
- Manufacturing plant
  - Distributor
  - Licensee

# Wilkhahn worldwide



Top left: New York showroom  
Top right: London showroom  
Bottom left: Tokyo showroom  
Bottom right, Brussels showroom

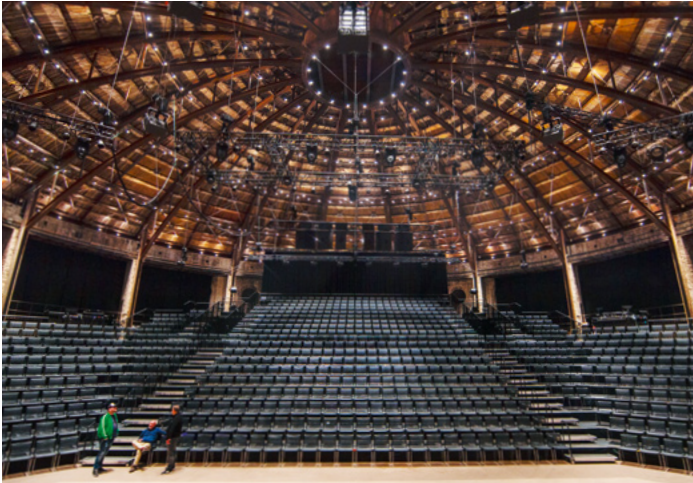


Top left: Singapore showroom  
Top right: Sydney showroom  
Bottom left: Vienna showroom  
Bottom right: Rotterdam showroom

### **At home the world over**

Wilkhahn design made in Germany is popular the world over. That is why we are at home in many countries: Australia, Austria, Belgium, China, Germany, Hong Kong, Japan, Morocco, the Netherlands, Poland, Spain, Switzerland, Singapore, South Africa, United Arab Emirates, United Kingdom, United States of America.

# Reference projects



## Education and culture

Top: Gas Værk Theatre, Copenhagen,

Photo: Louise Stickland, loosplat

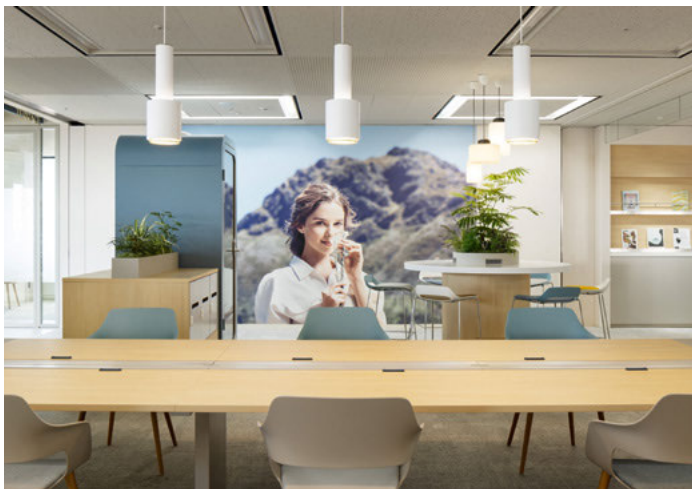
Bottom: University of St. Gallen, photo: Anna-Tina Eberhard

## NGOs/government

Top: Chamber of Commerce Luxembourg,

Photo: Vincent Remy

Bottom: GIZ campus Bonn, photo: HGEsch



### Corporations

Top: Ramboll Berlin, photo: © PLY Atelier Foto Anne Deppe  
 Bottom: L'Oréal Tokyo, photo © Nacasa & Partners Inc.

### Hospitality

Top: Zeitgeist Hotel Vienna, photo: Stefan Huger/studiohuger.at  
 Bottom: Hotel Die Sandburg Langeoog,  
 Photo: Leuchtende Hotelfotografie, Thomas Haberland.

### Pictures speak louder than words

Over reference projects at 40 locations in 16 countries and on five continents, from New York to Melbourne, Schliersee to Tokyo, Madrid, Copenhagen, Geneva and Hong Kong show how architects and interior designers feature Wilkhahn furniture in an array of contexts. For more information, go to [wilkhahn.com/en/references/](http://wilkhahn.com/en/references/).

We hope you can draw lots of inspiration.

# Awards



**FS-Line** 1981, 1982, 1984, **Timetable** 2001



GOOD DESIGN

**Good Design Japan:**

**FS-Line** 1985, 1989, 1996, **Modus** 1996, **ON** 2010



DESIGN AWARD

**FS-Line** 1987, **Palette** 1991, **Stitz 2** 1993, **Modus** 1995, **Confair/Confair folding table** 1996, **Modus Basic 27** 1998, **Contas** 2001, **Timetable** 2002, **Neos** 2005, **Aline** 2007 Gold, **Travis/Travis Lift** 2008, **ON** 2010, **Graph chair** 2012, **Asienta** 2013, **Graph table** 2014, **Stand-up** 2015, **IN** 2016, **Metrik** 2017, **Occo chair** 2017, **mAx** 2018, **AT** 2019, **Intra** 2020, **Versa** 2020, **AT Mesh** 2022, **Yonda** 2022



daelen preis  
Schweiz

**Palette** 1991, **Stitz 2** 1993, **Modus** 1995



reddot award winner

**FS-Line** 1991, **Stitz 2** 1992, **Modus** 1995, **Confair/Confair folding table** 1996, **Modus Basic 27** 1998, **Palette** 1991, **Contas** 2000, **Timetable** 2001, **Aline** 2006, **Travis/Travis Lift** 2008, **Graph chair** 2012, **Asienta** 2013, **IN** 2015, **Metrik** 2017, **Occo chair** 2017, **Aula** 2018, **mAx** 2018, **Insit** 2019, **Intra** 2019, **Occo Conference** 2020, **Yonda** 2022 Best of Best



AWARDS FOR PUBLICATION EXCELLENCE

**Palette** 1994, **Stitz 2** 1994, **Confair folding table** 1995, **Modus** 1995



IN, AT 2018



[www.blauer-engel.de/uz117](http://www.blauer-engel.de/uz117)

- emissionsarm
- geringer Schadstoffgehalt

AT – some models from the 187 range, 2020



DESIGNPREIS DER BUNDESREPUBLIK DEUTSCHLAND

**Modus** 1996, **ON** 2010 Silver, **Graph Sessel** 2012 nominee, **Asienta** 2013 nominee



GOOD DESIGN

**Modus** 1996, **Modus Basic 27** 1998, **Contas** 2000, **Aline** 2008, **ON** 2010, **Graph chair** 2012



MENTIONE D'ONORE

**Confair folding table** 1998



Focus Energy Gold 2006

**Aline** 2006 Gold



DESIGN AWARD

**Design Award Australia:** **ON** 2010, **Graph chair** 2012



mixology<sup>10</sup>

**ON** 2010



NeoCon Best of Competition

**ON** 2010



ecodesign

**ON** 2012



GOOD DESIGN

**Good Design Korea:** **Graph chair** 2012



Interior Innovation award 2012 Winner

**Graph chair** 2012



**Asienta** 2013



**Graph table** 2014



**Stand-up** 2015



**Graph chair** 2012, **Aline** 2014, **Aline S** 2014, **Stand-up** 2014, **Landing** 2018, **Sitzbock** 2018, **AT Mesh** 2020, **Rider** 2020, **Yonda** 2020



**Graph chair** 2013, **Asienta** 2014 nominee, **Graph table** 2015, **IN** 2016, **Metrik** 2019 Gold, **AT** 2020, **AT Mesh** 2022, **Yonda** 2023



**Graph chair** 2014



**IN** 2015 Gold



**Metrik** 2017 Silver



**Focus Energy** 2006 Gold  
**Aline** 2006 Gold



**Metrik** 2017 best of best



**Occo chair** 2017 Winner



**Aula** 2018 best of best



**mAx** 2018 Winner



**Sitzbock** 2018



**AT** 2019 best of best



**Intra** 2020 Winner, **Versa** 2020 Winner



**Yonda Lounge** 2023 Winner



**ON** 2024 (task and visitor chairs), **AT** 2024, **IN** 2024, **ME** 2021

### Accolades bring worldwide acclaim

Wilkhahn is one of the first companies in Germany that recognized design as a core quality factor and USP. We've been collaborating with a whole host of renowned designers since the 1950s. And we're overjoyed that people like our product designs.

# Index

---

## **Aline**

Product overview page 54  
photos pages 46 / 47

## **Aline tables**

Product overview page 102

## **Asienta**

Product overview page 72  
photos pages 70 / 71

## **Asienta tables**

Product overview page 72  
photos page 70

## **AT**

Product overview page 21  
photos page 12

## **Aula**

Product overview page 55  
photos pages 48, 86, 87

## **Ceno**

Product overview page 56

## **Confair Next**

Product overview pages 116, 117  
photos pages 110, 112, 113, 114

## **Confair folding table**

Product overview pages 90, 91  
photos page 82

## **Contas**

Product overview page 96

## **Decide**

Product overview page 40  
photos pages 32, 33

## **FS-Line**

Product overview page 23  
photos page 16

## **FS Management**

Product overview page 23  
photos page 17

## **Graph**

Product overview page 41  
photos pages 7, 30, 31, 98

## **Graph tables**

Product overview page 105  
photos pages 50, 98

## **IN**

Product overview page 21  
photos page 11

## **Insit**

Product overview page 73  
photos pages 60, 62, 63, 65

## **Insit tables**

Product overview page 73  
photos pages 60, 62

## **Intra**

Product overview page 42  
photos pages 26, 28, 29

## **Landing**

Product overview page 80

## **Logon**

Product overview page 104

## **mAx**

Product overview page 94, 95  
photos pages 48, 86, 87

## **mAx light**

Product overview page 94

## **ME**

Product overview page 22  
photos page 13

## **Metrik**

Product overview page 57  
photos page 49

## **Modus Basic**

Product overview page 24

## **Modus executive**

Product overview page 24

## **Modus medium**

Product overview page 24

## **Modus Compact**

Product overview page 24  
photos page 15

## **Neos**

Product overview page 25  
photos page 14

## **Occo**

Product overview page 58  
photos pages 44, 50, 51, 100

## **Occo Conference**

Product overview page 42  
photos pages 36, 27

## **Occo Lounge**

Product overview page 74  
photos pages 38, 66, 67

## **Occo tables**

Product overview page 103  
photos P. 69, 100

## **ON**

Product overview page 20  
photo page 9

## **Pep**

Product overview page 59

## **Rider**

Product overview page 81

## **Sitzbock**

Product overview page 80  
photos page 79

## **Sola**

Product overview page 43  
photos page 34, 35

## **Stand-up**

Product overview page 81  
photos pages 69, 76

## **Stitz 2**

Product overview page 81  
photos pages 78, 85

## **Timetable**

Product overview page 92  
photos page 108

## **Timetable Lift**

Product overview page 93  
photos page 85

## **Timetable Shift**

Product overview page 92  
photos page 84

## **Timetable Smart**

Product overview page 92

## **Versa**

Product overview page 97  
photos pages 88, 89

## **Wi Chair**

Product overview page 25  
photos pages 18, 19

## **Yonda**

Product overview page 59  
photos pages 52, 53

## **Yonda Conference**

Product overview page 43  
photos pages 38, 39

## **Yonda Lounge**

Product overview page 75  
photos pages 68, 69

## **Yonda Lounge tables**

Product overview page 75  
photos page 68

# Service

---

With information about products, projects and service offerings, the website's new structure and design provide quick and easy access to the Wilkhahn world. You'll be able to find everything you need there – from digital brochures to CAD data to reference images. Or news about sales partners to the sustainability report.

If you'd like to know about all the exciting things happening at Wilkhahn in the world of design, architecture and the industry, click on the home page at the bottom or in the menu on the blog or reference projects.

We hope you enjoy surfing. Feel free to contact us for more information or details about our services.

Wilkening + Hahne GmbH+Co. KG  
Fritz-Hahne-Strasse 8, 31848 Bad Münder, Germany  
Tel.: +49 5042 999 100

[contact@wilkhahn.de](mailto:contact@wilkhahn.de)

[wilkhahn.com](http://wilkhahn.com)



#wilkhahn

© 2025 Wilkhahn  
Wilkening + Hahne GmbH+Co. KG  
Fritz-Hahne-Strasse 8  
31848 Bad Münder  
Germany

Credits for figures and photos where not stated:  
Armin Kammer  
Espen Eichhöfer, Ostkreuz Agentur der Fotografen  
Frank Schinski, Ostkreuz Agentur der Fotografen  
Horst Haaso  
Mandy Will  
Martin Mai  
Oliver Oettli  
Penny Yan  
Thomas Bach  
Vojislav Nikoloic  
White ID  
Wilkhahn archive  
Wilkhahn and 1zu33  
The Subdivision

Creation of layout and project management  
asieben GmbH

Certificate  
This product is FSC®-compliant® / FSC®-C118389

Languages  
German, English, French, Spanish



**Wilkahn Germany**

Wilkening + Hahne GmbH+Co. KG, Fritz-Hahne-Strasse 8, 31848 Bad Münden, Germany

**Wilkahn worldwide**

Australia, Belgium, China, Germany, Spain, Hong Kong, Japan, Morocco,  
the Netherlands, Austria, Poland, Switzerland, Singapore, South Africa, United Arab Emirates,  
United Kingdom, United States of America

**wilkahn.com**